

# THIS IS FRONT ROW & CO.



**FRONT ROW & CO**

HERITAGE CLOTHING

2020

LEFT: NEW FR905/FR131/FR621  
RIGHT: FR501/FR135/FR500/NEW FR625





Every day brings a chance to make a change;  
take an exciting new direction.

Clothes are made to be worn. Ours are made to last.

For teams, clubs and workplaces. For brands looking  
to put their name to quality garments. For the carefree.  
For those with a youthful spirit. For those who work  
hard and play harder.

**It's 2020.**

# THIS IS FRONT ROW & CO.

GREAT LOOKING LEISUREWEAR.  
THOUGHTFULLY CREATED.

04  
**NEW FOR 2020**

06  
**CASUAL TOPS**

16  
**RUGBY SHIRTS**

26  
**SWEATS**

34  
**WOVENS**

44  
**LAST, BUT NOT LEAST**

# FRONT ROW & CO

HERITAGE CLOTHING



2020

ALL NEW STYLES ARE TAG FREE  
FOR EASY RE-BRANDING



FR006  
Panelled  
Quarter Zip  
Pg 22

FR625  
Stretch Cargo  
Trousers  
Pg 35



FR840  
Sweat with  
Striped Cuffs  
Pg 29

FR640  
Joggers with  
Striped Cuffs  
Pg 28

FR841  
Hoodie with  
Striped Cuffs  
Pg 29





5

# CASUAL TOPS

FR134/FR135/FR230

PRINTED FOR ILLUSTRATION PURPOSES: ALL GARMENTS ARE FREE FROM DECORATION



# Long Sleeved BASEBALL T-SHIRT

FR140

- TAG FREE -

Regular fit long sleeved unisex T-shirt.  
Contrast raglan sleeves. Ribbed neck.  
Herringbone back neck tape. 'V' flatlock  
stitching detail at neck. Tag Free.

100% Cotton  
180gsm Single Jersey  
(Light Heather Grey:  
99% Cotton/1% Viscose)



FR140 SIZES: XS - 2XL



# Tipped T-SHIRT

FR131

- TAG FREE -



Regular fit short sleeved unisex T-shirt with tipped neck and cuffs. Back neck tape. Tag Free.

60% Cotton/40% Polyester  
180gsm Single Jersey  
(Navy: 100% Cotton)

FR131 SIZES: XS - 2XL



Blue Marl/  
White

Burgundy  
Marl/White

Navy/  
White





# Washed Long Sleeved HENLEY T-SHIRT

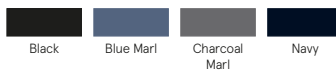
FR130

- TAG FREE -



Long sleeved unisex henley T-shirt with 'grandad' collar. 3-button placket. Contrast under placket. Cover-stitch detail. Garment washed. Tag Free.

FR130 SIZES: XS - 2XL



100% Cotton  
180gsm Single Jersey  
Garment Washed  
(Charcoal Marl & Blue Marl:  
50% Cotton/50% Polyester)

# Long & Short Sleeved BRETON STRIPED T-SHIRTS

FR134 & FR135

- TAG FREE -



Regular fit long and short sleeved unisex T-shirts. Crew neck with stretch ribbed neckline. 'V' detail at neck. Flatlock stitching. Contrast plain upper panel. Tag Free.

100% Cotton  
180gsm Single Jersey

FR134/FR135 SIZES: XS - 2XL



Navy/White White/Navy



PRINTED FOR ILLUSTRATION PURPOSES. ALL GARMENTS ARE FREE FROM DECORATION





# Striped Jersey POLO SHIRT

FR230

- TAG FREE -

Unisex jersey polo shirt with flat knit collar & cuffs. 3-button placket with inner contrast. Herringbone taped side vents. Tag Free.

—  
100% Cotton  
180gsm Single Jersey

FR230 SIZES: XS - 2XL



Navy/White White/Navy



# Stand Collar Stretch POLO SHIRT

FR244

- TAG FREE -



Unisex stretch micro pique polo shirt.  
Flat knit collar & cuffs. Stand collar with  
tipped edge. 3-button placket. Tag Free.

96% Cotton/4% Elastane  
200gsm Micro Pique  
(Heather Grey: 81% Cotton/  
15% Viscose/4% Elastane)

FR244 SIZES: XS - 2XL

< STRETCH >

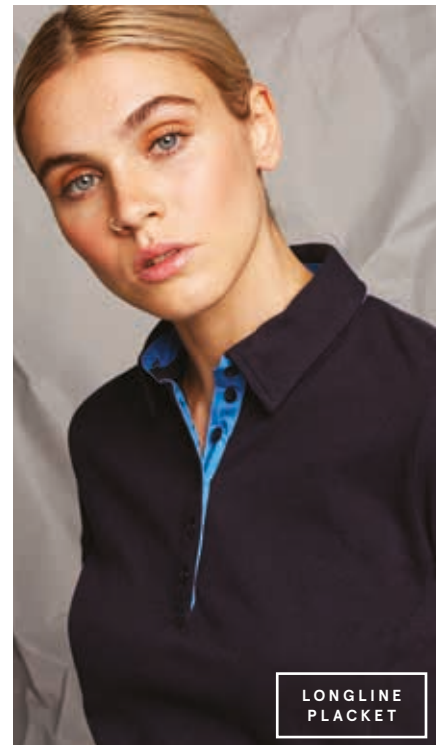


TIPPED  
EDGE

# Men's & Ladies' Contrast Pique POLO SHIRTS

FR200 & FR201

- TAG FREE -



Pique polo shirts with contrast woven inner collar band and placket. Contrast herringbone tape in side vents. Contrast tipping on cuffs. Self-fabric collar. Side panels with flatlock stitching. Ladies' style has longline placket and is shaped at waist. Tag Free.

100% Cotton  
200gsm Pique

MEN'S FR200 SIZES: S - 2XL  
LADIES' FR201 SIZES: S - 2XL



PLEASE NOTE: SOME STOCK OF FR200/FR201 MAY HAVE SEWN BACK-NECK LABELS. ALL RECENT AND NEW PRODUCTION IS TAG FREE.

# Men's & Ladies' Diagonal Striped Pique POLO SHIRTS

FR212 & FR213

- TAG FREE -

Pique polo shirts with diagonal stripe at front and plain back. Flat knit collar. Ribbed cuffs with contrast tipping. Pearlised buttons with cross-stitch detail. Contrast herringbone tape in back neck and side vents. Ladies' is shaped at waist. Tag Free.

100% Cotton  
200gsm Pique

MEN'S FR212 SIZES: XS - 2XL

LADIES' FR213 SIZES: S - 2XL



NEW FR006/FR007/FR100

16

# RUGBY SHIRTS







# Men's, Ladies' & Kids' Long Sleeved Plain RUGBY SHIRTS

FR100, FR101 & FR109

Rugby shirts with traditional woven collar. Ribbed cuffs. Side vents. Men's has taped shoulders. Ladies' is shaped at waist.

—  
100% Cotton  
270gsm Single Jersey

NEW SIZES  
XS & 5XL\*

FR100



FR109



FR100

MEN'S FR100 SIZES: XS – 5XL

XS, 4XL & 5XL available in Black/Black, Black/White, Navy/White and Red/White.

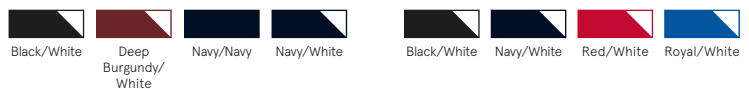


LADIES' FR101 SIZES: XS – 4XL

XS, 3XL & 4XL available in Black/White and Navy/White.

KIDS' FR109 SIZES:

S (5-6) M (7-8) L (9-10) XL (11-13)





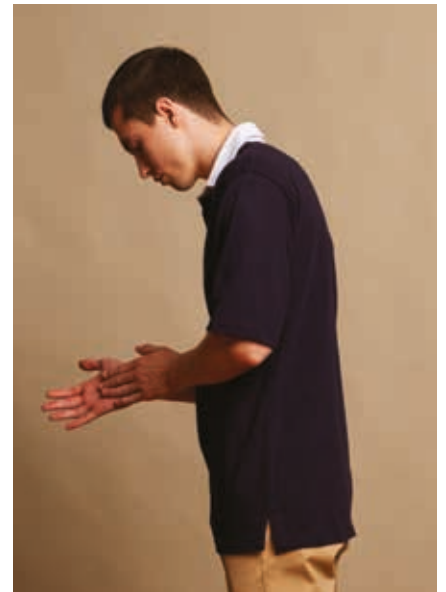
# Long & Short Sleeved Original RUGBY SHIRTS

FR001 & FR003



Heavyweight unisex rugby shirts with traditional woven collar. Ribbed cuffs. Taped shoulders and side vents. Rubber buttons. Locker patch.

—  
100% Ring Spun Cotton  
300gsm Heavyweight Single Jersey



## LONG SLEEVED FR001

SIZES: S – 3XL

3XL available in Black/White, Navy/White and White/White



## SHORT SLEEVED FR003

SIZES: S – 2XL



# Quartered & Striped RUGBY SHIRTS

FR002 & FR008

Heavyweight unisex rugby shirts with traditional woven collar. Ribbed cuffs. Taped shoulders and side vents. Rubber buttons.

—  
100% Ring Spun Cotton  
300gsm Heavyweight Single Jersey



CUT & SEWN  
PANELS

QUARTERED FR002  
SIZES: S – 2XL



STRIPED FR008  
SIZES: S – 2XL



# Panelled QUARTER ZIP

FR006

— TAG FREE —

Heavyweight unisex ¼ zip top.  
Self-fabric funnel neck. Silver YKK  
metal zipper and zip pull. Ribbed cuffs.  
Taped shoulders, neck and side vents.  
Stepped hem. Tag Free.

—  
100% Ring Spun Cotton  
300gsm Heavyweight Single Jersey

FR006 SIZES: XS — 2XL



— NEW —



# Panelled RUGBY SHIRT

FR007

- TAG FREE -

Heavyweight unisex rugby shirt with traditional woven collar. Ribbed cuffs. Taped shoulders and side vents. Rubber buttons. Tag Free.

—  
100% Ring Spun Cotton  
300gsm Heavyweight Single Jersey



FR007 SIZES: S - 2XL



PRINTED FOR ILLUSTRATION PURPOSES: ALL GARMENTS ARE FREE FROM DECORATION

# Premium Superfit RUGBY SHIRTS

FR104

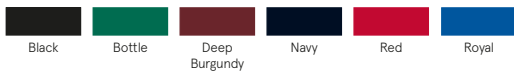
- TAG FREE -

Unisex rugby shirt with traditional woven collar. Peached fabric for a super-soft finish. Slim fit. Contrast striped tape at back neck and side vents. Zig-zag stitching detail under collar. Tag Free.

—  
100% Cotton  
300gsm Peach Finish  
Heavyweight Single Jersey



FR104 SIZES: XS – 3XL





# Front Row Collection Supersoft Long Sleeved **RUGBY SHIRT**

FR043



Unisex rugby shirt with traditional woven collar. Heavily brushed; supersoft hand feel. Ribbed cuffs. Self-fabric collar with contrast woven undercollar and placket. Stepped hem with contrast woven facing. Contrast tape at back neck, side vents and left side seam (as worn). Locker patch.

—  
100% Combed Cotton  
260gsm Heavily Brushed  
Single Jersey

FR043 SIZES: S – 2XL



25



NEW FR840/NEW FR640/NEW FR841

26

SWEATS



# Striped cuffed JOGGERS

FR 640

- TAG FREE -

- NEW -

28

Slim fit unisex joggers. Quality cotton based brushed back fleece. Elasticated self-fabric waistband. Self-coloured herringbone drawcord. Elasticated striped rib cuffs. Side Pockets. Back Pocket. Tag Free.

70% Cotton/30% Polyester  
280gsm Brushed Back Fleece

FR 640 SIZES: XS - 2XL



# Striped cuffed HOODIE

FR 841

- TAG FREE -



Unisex hoodie with elasticated striped rib cuffs and hem. Quality cotton based brushed back fleece. Self-coloured herringbone drawcord. Kangaroo pocket. Set-in sleeves. Herringbone back-neck tape. Tag Free.

70% Cotton/30% Polyester  
280gsm Brushed Back Fleece

FR 841 SIZES: XS - 2XL



# Striped cuffed SWEAT

FR 840

- TAG FREE -



Unisex sweat with elasticated striped rib cuffs and hem. Quality cotton based brushed back fleece. Plain ribbed crew neck. Set-in sleeves. Herringbone back-neck tape. Tag Free.

70% Cotton/30% Polyester  
280gsm Brushed Back Fleece

FR 840 SIZES: XS - 2XL



# French Terry JOGGERS

FR 630

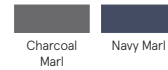
- TAG FREE -



Slim fit French Terry unisex joggers. Elasticated ribbed waistband and ribbed cuffs at hem. Contrast drawcord. Coverstitch detail on seams. Side pockets. Back pocket. Tag Free.

60% Cotton/40% Polyester  
280gsm French Terry  
(Charcoal Marl:  
65% Polyester/35% Cotton)

FR 630 SIZES: XS - 2XL



# French Terry HOODIE

FR832

- TAG FREE -

Slim fit French Terry unisex hoodie with raglan sleeves and 'v' insert at neck. Ribbed waist and cuffs. Coverstitch detail on seams. Herringbone back neck tape. Contrast drawcord. Kangaroo patch pocket. Tag Free.

60% Cotton/40% Polyester  
280gsm French Terry  
(Charcoal Marl:  
65% Polyester/35% Cotton)

FR832 SIZES: XS - 2XL



Charcoal  
Marl



Navy Marl



31

# Men's & Ladies' TRACK PANTS

FR600 & FR601

- TAG FREE -



Heavyweight track pants with coverstitch detail on seams. Elasticated ribbed waistband with chunky contrast drawcord. Metal eyelets. Side pockets. Back pocket.

—  
80% Cotton/20% Polyester  
330gsm Brushed Back Fleece

MEN'S FR600 SIZES: S – XL

LADIES' FR601 SIZES: XS – XL



PLEASE NOTE: SOME STOCK OF FR600/FR601 MAY HAVE SEWN LABELS. ALL RECENT AND NEW PRODUCTION IS TAG FREE.



# Front Row Collection Supersoft Quarter Zip **SWEATSHIRT**

FR040

Unisex ¼ zip sweatshirt. Heavily brushed for a supersoft hand feel. Jersey tipped cuffs. Self-fabric collar with contrast woven facing. Stepped hem with contrast woven facing. Contrast tape at side vents and left side seam (as worn). Locker patch. Metal zip and puller.

—  
80% Cotton/20% Polyester  
280gsm Brushed Back Fleece

FR040 SIZES: S – 2XL



Black

Navy



FR501/NEW FR625/FR500  
FR622/NEW FR905/FR605

34

# WOVENS



# Stretch Cargo TROUSERS

FR 625

- TAG FREE -

Slim leg cargo trousers. Stretch fabric. YKK zip fly with buttoned waistband. Slanted front pockets. Back welt pockets with flaps and hook and loop fastening. Patch pockets on outer leg. Front knee darts. Functioning herringbone drawcord at hem. Garment washed. Tag Free.

97% Cotton/3% Elastane  
220gsm Stretch Twill

< **STRETCH** >



FR 625 SIZES: XS - 2XL



# Men's & Ladies' STRETCH CHINOS

FR621 & FR622

- TAG FREE -

Flat front chino trousers. Stretch fabric. YKK zip fly with buttoned waistband. Slanted front pockets. Back welt pockets. Garment washed. Tag Free.

97% Cotton/3% Elastane  
220gsm Stretch Twill

< STRETCH >



MEN'S FR621 SIZES: 28" - 40"  
REG 32"/LONG 34"



LADIES' FR622 SIZES: XS/8 - 2XL/18  
REG 32"





# Men's & Ladies' STRETCH CHINO SHORTS

FR605 & FR606

- TAG FREE -



Flat front chino shorts. Stretch fabric. YKK zip fly with buttoned waistband. Slanted front pockets. Back welt pockets. Garment washed. Tag Free.

—  
97% Cotton/3% Elastane  
220gsm Stretch Twill

< **STRETCH** >

MEN'S FR605 SIZES: 28" - 40"

LADIES' FR606 SIZES: XS/8 - 2XL/18



# Men's BOARD SHORTS

FR 602

- TAG FREE -

Panelled board shorts. Elasticated waistband.  
Inner mesh brief. Inner key pocket. Side pockets.  
Back patch pocket with metal eyelet. Tag Free.

100% Polyester  
120gsm Microfibre

FR 602 SIZES: XS - 2XL



EMBROIDERED FOR ILLUSTRATION PURPOSES: ALL GARMENTS ARE FREE FROM DECORATION

# Checked Cotton SHIRT

FR500

— TAG FREE —

Slim fit unisex checked shirt. Curved hem.  
Button down collar. Pearlised buttons.  
Left chest pocket. Contrast tape in back  
neck and sleeve gauntlet. 2 button cuffs.  
Back yoke with hanger loop. Tag Free.

—  
100% Cotton  
140gsm Poplin

FR500 SIZES: S — 2XL



Black/White Blue/White



40

PLEASE NOTE: SOME STOCK OF FR500 MAY  
HAVE SEWN BACK-NECK LABELS. ALL RECENT  
AND NEW PRODUCTION IS TAG FREE.

Front Row & Co. 2020



# Classic Chambray SHIRT

FR501

- TAG FREE -



EMBROIDERED FOR ILLUSTRATION PURPOSES. ALL GARMENTS ARE FREE FROM DECORATION

# Supersoft Casual SHIRT

FR502

- TAG FREE -



41

Slim fit unisex chambray shirt. Curved hem. Button down collar. Pearlised buttons. Left chest pocket. Contrast tape detail in back neck and sleeve gauntlet. 2 button cuff. Back yoke with hanging loop.

—  
100% Cotton  
200gsm Chambray

FR501 SIZES: S - 2XL



Chambray  
Blue



Slim fit unisex brushed oxford shirt. Narrow button-down collar. Supersoft fabric. Back yoke. 1 button cuff. Pearlised buttons. Tag Free.

—  
80% Cotton/20% Polyester  
170gsm Brushed Oxford

FR502 SIZES: XS - 2XL



Light Blue



# Diamond Quilt GILET

FR 903

Unisex quilted gilet with envelope pockets.  
Shower resistant outer fabric. Front zip  
and storm flap with press stud fastening.  
Hanger loop on back of collar suitable  
for decoration. Curved hem at back.

Outer: 100% Polyester  
210T Taffeta with Shower  
Resistant PU Coating  
Lining & Wadding: 100% Polyester

FR 903 SIZES: 2XS - 2XL

Black

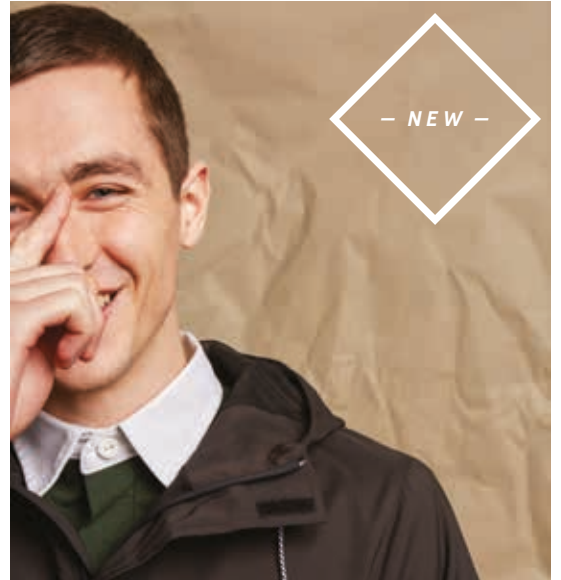
42



# Pullover Half Zip JACKET

FR905

- TAG FREE -



43



Showerproof hooded unisex pullover jacket with mesh lining. Regular fit. Chest panel with flap on front and back. Functional contrast lace drawcords around hood with metal eyelets. Centre front and side-seam zip openings with textured zip pullers. Part-elasticated cuffs. Large kangaroo pocket. Inner patch pocket and embroidery access. Back neck hanging loop. Tag Free.

100% Polyester  
150gsm Poplin T400 Water Resistant Finish

FR905 SIZES: XS - 2XL



# BODY MEASURING GUIDE

To find your perfect fit, first measure yourself close to your body. Check our measuring guide for your body size and pick the garment size closest to your body measurements. Some garments are made to fit more closely than others, so we have included all our garment measurement specifications on the following pages, to help you choose the right size and best fit for you.

*It is advisable to use actual body measurements rather than measuring over clothes.*

*The fit of a garment may vary depending on the cut, style and fabric.*

## MEN'S GARMENTS

TOPS & OUTERWEAR EXCLUDING FR104/FR500/FR501	2XS	XS	S	M	L	XL	2XL	3XL	4XL	5XL
EUR - Chest - To Fit	42-44	44-46	46-48	48-50	52	54-56	58	60-62	62-64	64-66
Chest - To Fit - Inches	32-34	34-36	36-38	38-40	42	44-46	48	50-52	52-54	54-56
Chest - To Fit - CMs	81-86	86-91	91-96	96-101	107	112-117	122	127-132	132-137	137-142
EXCEPTIONS - FR104/FR500/FR501	XS	S	M	L	XL	2XL	3XL			
FR104 - EUR - Chest - To Fit	44-46	46-48	48-50	52	54-56	56-58	58-60			
FR104 - Chest - To Fit - Inches	34-36	36-38	38-40	42	44-46	46-48	48-50			
FR104 - Chest - To Fit - CMs	86-91	91-96	96-101	107	112-117	117-122	122-127			
FR500 & FR501 - EUR - Chest - To Fit	44-46	46-48	48-50	52	52-54	54-56				
FR500 & FR501 - Chest - To Fit - Inches	34-36	36-38	38-40	40-42	42-44	44-46				
FR500 & FR501 - Chest - To Fit - CMs	86-91	91-96	96-101	101-107	107-112	112-117				

TROUSERS & SHORTS	2XS	XS	S	M	L	XL	2XL			
UK - Waist - To Fit - Inches	28	30	32	34	36	38	40			
EUR - Waist - To Fit	38	40	42	44	46	48	50			
Waist - To Fit - CMs	71	76	81	86	91	96	101			
Regular Inside Leg Length - Inches	32	32	32	32	32	32	32			
Long Inside Leg Length - Inches	34	34	34	34	34	34	34			

## LADIES' GARMENTS

TOPS & OUTERWEAR	XS	S	M	L	XL	2XL	3XL	4XL		
UK - To Fit	8	10	12	14	16	18	20	22		
EUR - To Fit	36	38	40	42	44	46	48	50		
Chest - To Fit - Inches	30-32	32-34	34-36	36-38	38-40	40-42	42-44	44-46		
Chest - To Fit - CMs	78-81	81-86	86-91	91-96	96-101	101-107	107-112	112-117		

TROUSERS & SHORTS	XS	S	M	L	XL	2XL				
UK - To Fit	8	10	12	14	16	18				
EUR - To Fit	36	38	40	42	44	46				
Waist - To Fit - Inches	26	28	30	32	34	36				
Waist - To Fit - CMs	66	71	76	81	86	91				
Inside Leg Length - Regular Inches	32	32	32	32	32	32				

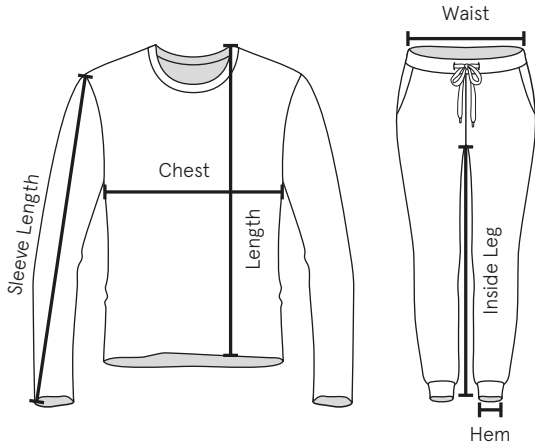
## KIDS' GARMENTS

TOPS - AGE	5/6	7/8	9/10	11/13
Height - CMs*	116	128	140	158
Chest - To Fit - Inches	24-26	26-28	28-30	30-32
Chest - To Fit - CMs	60-66	66-71	71-76	76-81

\*Please note that height is a better indication of fit than age.

# SPEC SUMMARY

CHARTS SHOW GARMENT MEASUREMENTS, MEASURED FLAT, IN CENTIMETRES UNLESS OTHERWISE STATED.



<b>CHEST</b>	Measure flat 2.5cm below armhole.
<b>FRONT LENGTH</b>	Measure from HPS (High Point Shoulder – where the shoulder seam meets the neck of the garment) to the hem.
<b>SLEEVE LENGTH</b>	Measure overarm from shoulder seam to end of cuff.
<b>WAIST</b>	Measure flat across full width of waistband.
<b>INSIDE LEG</b>	Measure from crotch to hem.
<b>HEM</b>	Measure flat across width of hem

TOPS & OUTERWEAR			XS	S	M	L	XL	2XL	3XL	4XL	5XL	TOL
FR001	Long Sleeved Original RUGBY SHIRT	Chest		47	51	56	61	63.5	68.5			+/-1.5
		Length		72.5	74.5	77	79.5	82	83			+/-2
		Sleeve Length		56	58.5	61	63.5	66	66			+/-1.5
FR002	Quartered RUGBY SHIRT	Chest		47	51	56	61	63.5				+/-1.5
		Length		72.5	74.5	77	79.5	82				+/-2
		Sleeve Length		56	58.5	61	63.5	66				+/-1.5
FR003	Short Sleeved Original RUGBY SHIRT	Chest		47	51	56	61	63.5				+/-1.5
		Length		72.5	74.5	77	79.5	82				+/-2
		Sleeve Length		29	29	29	30	31				+/-1.5
FR006 NEW	Panelled QUARTER ZIP	Chest	50	53	56	59	62	65				+/-2
		Length	68	70	72	74	76	78				+/-1.5
		Sleeve Length	59	60	61	62	63	64				+/-1.5
FR007	Panelled RUGBY SHIRT	Chest		47	51	56	61	63.5				+/-1.5
		Length		72.5	74.5	77	79.5	82				+/-2
		Sleeve Length		56	58.5	61	63.5	66				+/-1.5
FR008	Striped RUGBY SHIRT	Chest		47	51	56	61	63.5				+/-1.5
		Length		72.5	74.5	77	79.5	82				+/-2
		Sleeve Length		56	58.5	61	63.5	66				+/-1.5
FR040	Supersoft Quarter Zip SWEATSHIRT	Chest		52	56	60	64	68				+/-1.5
		Length		73	74	75	76	77				+/-2
		Sleeve Length		60	61	62	63	64				+/-2
FR043	Supersoft Long Sleeved RUGBY SHIRT	Chest		48	52	56	60	64				+/-1.5
		Length		73	75	77	79	81				+/-2
		Sleeve Length		65	66.5	68	70.5	73				+/-2
FR100	Men's Long Sleeved Plain RUGBY SHIRT	Chest	44	47	51	55	59	63	67	71	75	+/-1.5
		Length	69.5	72.5	74.5	77	79.5	82	83	84	85	+/-2
		Sleeve Length	53.5	56	58.5	61	63.5	66	68.5	71	73.5	+/-1.5
FR101	Ladies' Long Sleeved Plain RUGBY SHIRT	Chest	43	44.5	47	49.5	52	54.5	56	58		+/-1.5
		Length	64.5	67	67	68	69	69	70	71		+/-2
		Sleeve Length	61.5	62	63	63.5	64	64	64.5	64.5		+/-2
FR104	Premium Superfit RUGBY SHIRT	Chest	47	50	54	57	60	63	66			+/-1.5
		Length	70	72	73.5	75	76.5	78	79.5			+/-2
		Sleeve Length	63	65.5	67	68	69	70	71			+/-2

TOPS & OUTERWEAR			2XS	XS	S	M	L	XL	2XL	TOL
FR109	Kids' Long Sleeved Plain RUGBY SHIRT	Age			5-6	7-8	9-10	11-13		
		Chest			34	36	40	44		+/-1.5
		Length			49	59	62	65		+/-1.5
		Sleeve Length			42	48	49	50		+/-1.5
FR130	Washed Long Sleeved Henley T-SHIRT	Chest		46	49	52	55	58	61	+/-1.5
		Length		68	70	72	74	76	78	+/-2
		Sleeve Length		63.5	64.5	65.5	66.5	67.5	68.5	+/-2
FR131	Tipped T-SHIRT	Chest		46	49	52	55	58	61	+/-1.5
		Length		68	70	72	74	76	78	+/-2
		Sleeve Length		19.5	20.5	21.5	22.5	23.5	24.5	+/-1
FR134	Long Sleeved Breton Striped T-SHIRT	Chest		46	49	52	55	58	61	+/-1.5
		Length		68	70	72	74	76	78	+/-2
		Sleeve Length		63.5	64.5	65.5	66.5	67.5	68.5	+/-2
FR135	Short Sleeved Breton Striped T-SHIRT	Chest		46	49	52	55	58	61	+/-1.5
		Length		68	70	72	74	76	78	+/-2
		Sleeve Length		19	20	21	22	23	24	+/-1
FR140	Long Sleeved Baseball T-SHIRT	Chest		46	49	52	55	58	61	+/-1.5
		Length		68	70	72	74	76	78	+/-2
		Sleeve Length		73	74.5	76	77.5	79	80.5	+/-2
FR200	Men's Contrast Pique POLO SHIRT	Chest			48	52	56	60	64	+/-1.5
		Length			70	72.5	75	77.5	80	+/-2
		Sleeve Length			25	25.5	25.5	26	26.5	+/-1.5
FR201	Ladies' Contrast Pique POLO SHIRT	Chest			45	47.5	50	52.5	56	+/-1.5
		Length			64.5	65.5	66.5	67.5	68.5	+/-2
		Sleeve Length			15.0	15.5	16	16.5	17	+/-1
FR212	Men's Diagonal Striped Pique POLO SHIRT	Chest		46	48	52	56	60	64	+/-1.5
		Length		68	71.5	73.5	75.5	77.5	79.5	+/-2
		Sleeve Length		23.5	24	24.5	25.5	26	26.5	+/-1.5
FR213	Ladies' Diagonal Striped Pique POLO SHIRT	Chest			45	47.5	50	52.5	56	+/-1.5
		Length			65.5	67	68.5	69.5	70	+/-2
		Sleeve Length			15	15.5	16	16.5	17	+/-1
FR230	Striped Jersey POLO SHIRT	Chest		46	49	52	55	58	61	+/-1.5
		Length		68	70	72	74	76	78	+/-2
		Sleeve Length		22.5	23.5	24.5	25.5	26.5	27.5	+/-1.5
FR244	Stand Collar Stretch POLO SHIRT	Chest		46	49	52	55	58	61	+/-1.5
		Length		68	70	72	74	76	78	+/-2
		Sleeve Length		22.5	23.5	24.5	25.5	26.5	27.5	+/-1.5
FR500	Checked Cotton SHIRT	Chest			52.5	55	57.5	60.5	63	+/-1.5
		Length			74	75.5	77	78.5	80	+/-2
		Sleeve Length			67.5	68.5	69.5	70.5	71.5	+/-2
FR501	Classic Chambray SHIRT	Chest			52.5	55	57.5	60.5	63	+/-1.5
		Length			74	75.5	77	78.5	80	+/-2
		Sleeve Length			67.5	68.5	69.5	70.5	71.5	+/-2
FR502	Supersoft Casual SHIRT	Chest		48	51	54	57	60	63	+/-1.5
		Length		74	75.5	77	78.5	80	81.5	+/-2
		Sleeve Length		64	65	66	67	68	69	+/-2
FR832	French Terry HOODIE	Chest		48	51	54	57	60	63	+/-1.5
		Length		71	72	73	74	75	76	+/-2
		Sleeve Length		77	79	81	83	85	87	+/-2

TOPS & OUTERWEAR			2XS	XS	S	M	L	XL	2XL	TOL
FR 840 NEW	Striped Cuffed SWEAT	Chest		48	51	54	57	60	64	+/-1.5
		Length		68	70	72	74	76	78	+/-2
		Sleeve Length		64	65	66	67	68	69	+/-2
FR 841 NEW	Striped Cuffed HOODIE	Chest		48	51	54	57	60	63	+/-1.5
		Length		68	70	72	74	76	78	+/-2
		Sleeve Length		64	65	66	67	68	69	+/-2
FR 903	Diamond Quilt GILET	Chest	47	50	53	56	59	62	65	+/-1.5
		Length	63	65	67	69	70	72	74	+/-2
FR 905 NEW	Pullover Half Zip JACKET	Chest		51	54	57	60	63	66	+/-1.5
		Length		69	71	73	75	77	79	+/-2
		Sleeve Length		61.5	63.5	65.5	67.5	69.5	71.5	+/-2

TROUSERS & SHORTS		MEN'S	2XS/28"	XS/30"	S/32"	M/34"	L/36"	XL/38"	2XL/40"	TOL
		LADIES'	XS/8	S/10	M/12	L/14	XL/16	2XL/18		
FR 600	Men's TRACK PANTS	Waist			36	38	40	42		+/-1.5
		Hem			22.5	23	23	23.5		+/-1.5
		Inside Leg			82	82	83	83		+/-2
FR 601	Ladies' TRACK PANTS	Waist		34.5	37	39.5	42	44.5		+/-1.5
		Hem		19.5	20.5	21	21.5	22		+/-1.5
		Inside Leg		77	78.5	78.5	80.5	80.5		+/-2
FR 602	Men's Board SHORTS	Waist		33	36	39	42	45	48	+/-1.5
		Hem		26	27	28	29	30	31	+/-1.5
		Inside Leg		15.5	15.5	15.5	15.5	15.5	15.5	+/-1
FR 605	Men's Stretch CHINO SHORTS	Waist	36.5	39	42	44.5	47	49.5	52	+/-1.5
		Hem	22.5	23	23.5	24	24.5	25	25.5	+/-1.5
		Inside Leg	25	25	25	26	26	26	26	+/-1.5
FR 606	Ladies' Stretch CHINO SHORTS	Waist		37.5	40	42.5	45	47.5	50	+/-1.5
		Hem		24	24.5	25	26	27	27.5	+/-1.5
		Inside Leg		22	22	22	23	23	23	+/-1.5
FR 621	Men's Stretch CHINOS	Waist	36.5	39	42	44.5	47	49.5	52	+/-1.5
		Hem	17.5	18	18.5	19	20	20.5	21	+/-1
		Inside Leg Reg	32"	32"	32"	32"	32"	32"	32"	+/-2
		Inside Leg Long	34"	34"	34"	34"	34"	34"	34"	+/-2
FR 622	Ladies' Stretch CHINOS	Waist		37.5	40	42.5	45	47.5	50	+/-1.5
		Hem		15.5	16	16.5	17	17.5	18.5	+/-1
		Inside Leg		32"	32"	32"	32"	32"	32"	+/-2
FR 625 NEW	Stretch Cargo TROUSERS	Waist		40	42	44	46	48	50	+/-1.5
		Hem		18.5	18.5	18.5	18.5	18.5	18.5	+/-1
		Inside Leg		32"	32"	32"	32"	32"	32"	+/-2
FR 630	French Terry JOGGERS	Waist		35	37.5	40	42.5	45	47.5	+/-1.5
		Hem		11	11.5	12	12.5	13	13.5	+/-1
		Inside Leg		74	74	75	75	76	76	+/-2
FR 640 NEW	Striped Cuffed JOGGERS	Waist		35	37	39	41	43	45	+/-1.5
		Hem		10.5	11.5	11.5	12.5	13.5	14.5	+/-1
		Inside Leg		71	71	71	72	72	72	+/-2

# RANGE OVERVIEW

## CASUAL TOPS



— TAG FREE —

**FR130**  
Washed Long Sleeved  
Henley T-shirt  
Pg 09



— TAG FREE —

**FR131**  
Tipped T-shirt  
Pg 08



— TAG FREE —

**FR134**  
Long Sleeved Breton  
Striped T-shirt  
Pg 10



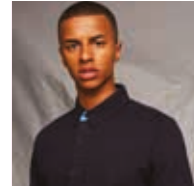
— TAG FREE —

**FR135**  
Short Sleeved Breton  
Striped T-shirt  
Pg 10



— TAG FREE —

**FR140**  
Long Sleeved Baseball  
T-shirt  
Pg 07



— TAG FREE\* —

**FR200**  
Men's Contrast Pique  
Polo Shirt  
Pg 14



— TAG FREE\* —

**FR201**  
Ladies' Contrast Pique  
Polo Shirt  
Pg 14



— TAG FREE —

**FR212**  
Men's Diagonal Striped  
Pique Polo Shirt  
Pg 15



— TAG FREE —

**FR213**  
Ladies' Diagonal Striped  
Pique Polo Shirt  
Pg 15



— TAG FREE —

**FR230**  
Striped Jersey Polo Shirt  
Pg 12



— TAG FREE —

**FR244**  
Stand Collar Stretch  
Polo Shirt  
Pg 13

48

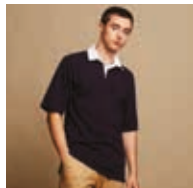
## RUGBY SHIRTS



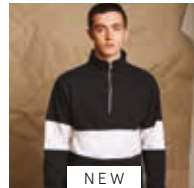
**FR001**  
Long Sleeved Original  
Rugby Shirt  
Pg 20



**FR002**  
Quartered Rugby Shirt  
Pg 21



**FR003**  
Short Sleeved Rugby  
Shirt  
Pg 20



NEW

— TAG FREE —

**FR006**  
Panelled Quarter Zip  
Pg 22

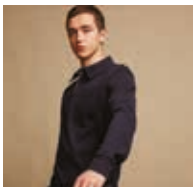


— TAG FREE —

**FR007**  
Panelled Rugby Shirt  
Pg 23



**FR008**  
Striped Rugby Shirt  
Pg 21



**FR043**  
Front Row Collection  
Supersoft Long Sleeved  
Rugby Shirt  
Pg 25



**FR100**  
Men's Long Sleeved  
Plain Rugby Shirt  
Pg 18/19

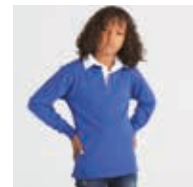


**FR101**  
Ladies' Long Sleeved  
Plain Rugby Shirt  
Pg 18/19



— TAG FREE —

**FR104**  
Premium Superfit  
Rugby Shirt  
Pg 24



**FR109**  
Kids' Long Sleeved  
Plain Rugby Shirt  
Pg 18



## SWEATS



**FR040**  
Front Row Collection  
Supersoft Quarter Zip  
Sweatshirt  
Pg 33



— TAG FREE\* —  
**FR600**  
Men's Track Pants  
Pg 32



— TAG FREE\* —  
**FR601**  
Ladies' Track Pants  
Pg 32



— TAG FREE —  
**FR630**  
French Terry Joggers  
Pg 30



NEW  
— TAG FREE —  
**FR640**  
Striped Cuffed Joggers  
Pg 28



— TAG FREE —  
**FR832**  
French Terry Hoodie  
Pg 31



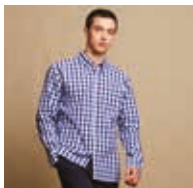
NEW  
— TAG FREE —  
**FR840**  
Striped Cuffed Sweat  
Pg 29



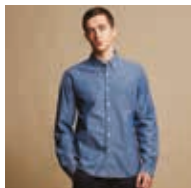
NEW  
— TAG FREE —  
**FR841**  
Striped Cuffed Hoodie  
Pg 29

49

## WOVENS



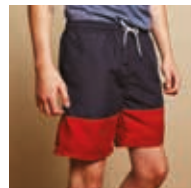
— TAG FREE\* —  
**FR500**  
Checked Cotton Shirt  
Pg 40



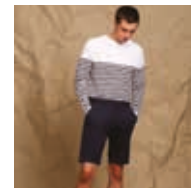
**FR501**  
Classic Chambray Shirt  
Pg 41



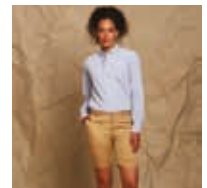
— TAG FREE —  
**FR502**  
Supersoft Casual Shirt  
Pg 41



— TAG FREE —  
**FR602**  
Men's Board Shorts  
Pg 39



— TAG FREE —  
**FR605**  
Men's Stretch Chino  
Shorts  
Pg 38



— TAG FREE —  
**FR606**  
Ladies' Stretch Chino  
Shorts  
Pg 38



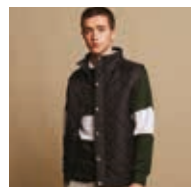
— TAG FREE —  
**FR621**  
Men's Stretch Chinos  
Pg 36/37



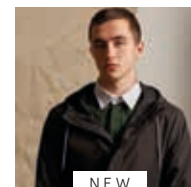
— TAG FREE —  
**FR622**  
Ladies' Stretch Chinos  
Pg 36/37



NEW  
— TAG FREE —  
**FR625**  
Stretch Cargo Trousers  
Pg 35



**FR903**  
Diamond Quilt Gilet  
Pg 42

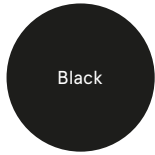


NEW  
— TAG FREE —  
**FR905**  
Pullover Half Zip Jacket  
Pg 43

\* PLEASE NOTE: SOME STOCK OF FR200/FR201/FR500/FR600/FR601 MAY HAVE SEWN-IN LABELS. ALL RECENT AND NEW PRODUCTION IS TAG FREE.

# PANTONES

ALL SHADES HAVE NEAREST PANTONE REF LISTED.  
ACTUAL SHADES MAY VARY.



Black

BLACK



Blue  
*FR 500*

19-3864 TPX  
PMS 287C



Blue Marl

18-3918 TPX  
PMS 7463U



Bottle

19-5917 TPX  
PMS 560C



Bright Green

17-6153 TPX  
PMS 348C



Bright Pink

18-2143 TPX  
PMS 214C



Bright Navy

19-3921 TPX  
PMS 539C



Burgundy

19-1725 TPX  
PMS 505C



Burgundy Marl

19-1617 TPX  
PMS 505C



Chambray Blue

18-4217 TPX  
PMS 5405C



Charcoal /  
Charcoal Marl

18-0000 TPX  
PMS COOL GRAY 10C



Light Blue

14-4112 TPX  
PMS 2707U



Deep Purple

19-3640 TPX  
PMS 2627C



Duck Egg Blue

15-4707 TPX  
PMS 5513C



Heather Grey

34% BLACK



Khaki

18-0312 TPX  
PMS 5605U



Deep Burgundy

19-1627 TPX  
PMS 490C



Light Grey

14-4201 TPX  
PMS 428C



Light Heather  
Grey

14-4201 TPX  
PMS 5315U



Marine Blue

18-4334 TPX  
PMS 7690C



Navy

19-4023 TPX  
PMS 296C



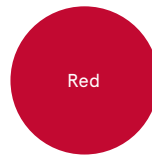
Navy Marl

19-4025 TPX  
PMS 289U



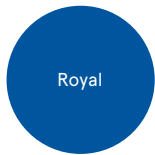
Olive

18-0426 TPX  
PMS 5743C



Red

18-1763 TPX  
PMS 186C



Royal

19-4044 TPX  
PMS 294C



Sky  
*FR 002*

15-4005 TPX  
PMS 544U



Sky Blue  
*FR 200/FR 201*

14-4121 TPX  
PMS 278C



Slate Grey

17-4402 TPX  
PMS 423C



Stone

16-1315 TPX  
PMS 7503U



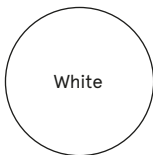
Surf Blue

15-4421 TPX  
PMS 298C



Vintage Red

19-1557 TPX  
PMS 202C



White

11-0103 TPX  
WHITE

# OUR ETHICAL STATEMENT

## ENVIRONMENTAL

Henbury are fully committed to the wellbeing and development of our planet which has encouraged big changes to our personal outlook and the way we trade. We aim to help our customers and make it easier to reduce the volume of waste going to landfill. Going forward, our products will be packaged in recycled plastic bags, which are recyclable at the end of life. Packaging components are being reduced by a huge 77% across shirts and we are reducing the number of products that are individually packaged. Finally, our bags will be made for reuse; they are resealable for ease of re-packaging and branding is being removed to allow ease of re-branding. On top of this, our employees are making a conscious choice to print less paper in the office and recycle all excess fabrics/garments.

It is our corporate responsibility to make an impact in reducing our carbon footprint. All of our marketing materials printed for 2020 have been carbon balanced helping reduce CO2 emissions and preserving ecologically endangered land with World Land Trust. By using FSC certified papers and printers, promoting responsible management of the world's forests, we are doing our part to make a change.

To find out more please visit: [carbonbalancedpaper.com](http://carbonbalancedpaper.com)



## MANUFACTURERS

We work with the very highest level of manufacturers developing strong, long-term partnerships to promote understanding of International Ethical Trading practices. Working with all our global suppliers to promote respect for workers' rights, ensuring workers are free from exploitation and discrimination, and enjoy conditions of freedom, security and equality. We fully recognise the importance of the people and the countries where we manufacture, and we require any associated manufacturer or supplier to share our commitment to fair and safe working practices. Our manufacturing locations are personally selected, inspected via an independent, fully recognised and accredited ethical auditing body and supported with continuous monitoring by our local representatives. This ensures working conditions and practices are to the highest standard and within local government laws.

In addition to ensuring our high ethical standards are achieved, we support and sponsor a number of local charities within the communities with which we work and manufacture.

## CERTIFICATIONS

A further indication of our commitment to social responsibility is in the number of certifications that we hold. Specific information by style and clarification relating to various certifications and standards is available from us on request.



## Get In Touch

If you want to find out more about the Front Row range or you would like more information about the company then get in touch; we love to chat. It's great to get your feedback too, so don't be shy!

Email: [enquiries@frontrowclothing.co.uk](mailto:enquiries@frontrowclothing.co.uk)

Web: [www.frontrowclothing.co.uk](http://www.frontrowclothing.co.uk)

For more great quality and style, check out the full range of brands at [henburybrands.com](http://henburybrands.com)

HENBURY BRANDS

## Be Social

Follow us on Twitter, Facebook and Instagram for the latest Front Row news and updates.



[frontrowandco](https://twitter.com/frontrowandco)



[frontrowandco](https://www.facebook.com/frontrowandco)



[frontrowandco](https://www.instagram.com/frontrowandco)

## Image Cloud

Download all our logos, torso shots and lifestyle photography via our Cloud on: [www.cloud.henbury.com](http://www.cloud.henbury.com)

## Meet The Team

We like to get out! Showcasing our new styles and great core products, it's our chance to show off. We know how busy you can be so, if you would like us to visit you then drop us an email: [enquiries@frontrowclothing.co.uk](mailto:enquiries@frontrowclothing.co.uk)

Come along to the following trade shows...



# FRONT ROW & CO

HERITAGE CLOTHING



[frontrowclothing.co.uk](http://frontrowclothing.co.uk)



[frontrowandco](#)



[frontrowandcoclothing](#)



[frontrowandcoclothing](#)

