

What's New 2020



Just Cool[®]

AWDiS



A studio photograph of two women in athletic wear. The woman on the left has blonde curly hair and is wearing a light teal tank top and leggings. The woman on the right has dark hair in a ponytail and is wearing a dark teal tank top and leggings. They are both looking towards the camera with serious expressions. The background is dark with a bright light source at the top center.

NEW THIS SEASON

PAGE 4 **JC001** COOL T

PAGE 4 **JC005** GIRLIE COOL T

PAGE 6 **JC019** GIRLIE CROSS BACK CROP TOP

PAGE 6 **JC078** GIRLIE COOL DYNAMIC LEGGINGS

PAGE 8 **JC004** COOL URBAN MARL T

PAGE 10 **JC110** COOL URBAN FITNESS T

PAGE 12 **JC030** COOL-FLEX ½ ZIP TOP

PAGE 12 **JC035** GIRLIE COOL-FLEX LONG ½ ZIP TOP

PAGE 14 **JC053** URBAN SLEEVELESS MUSCLE HOODIE

PAGE 16 **JC054** GIRLIE CROSS BACK HOODIE

PAGE 18 **JC166** GIRLIE COOL SEAMLESS CROP TOP

PAGE 18 **JC167** GIRLIE COOL SEAMLESS LEGGINGS

JCO01

COOL T

Fabric: 100% Polyester
Weight: 140gsm Size: XS-5XL

NEW
COLOURS

Where it all began. The Cool T is understated yet high performing, allowing you to focus fully and unlock your potential.

NEW INK BLUE
NEW BLUSH

FEATURES:
42 great colours (see main Just Cool 2020 brochure)
Inherent stretch fabric properties
Self fabric taped back neck
Twin needle stitching detail
Relaxed sports fit

 2 WAY STRETCH
  QUICK DRY
  WICKING
 LIGHTWEIGHT
  40+ UPF



JCO05

GIRLIE COOL T

Fabric: 100% Polyester
Weight: 140gsm Size: XS-XXL

NEW
COLOUR

Our classic Cool T is cut to a feminine fit integrating form and function to unlock your fitness potential.

NEW
BLUSH

FEATURES:
Curved back hem for additional comfort
23 great colours (see main Just Cool 2020 brochure)
Inherent stretch fabric properties
Twin needle stitching detail

 2 WAY STRETCH
  QUICK DRY
  WICKING
 LIGHTWEIGHT
  40+ UPF





JustCool

**DON'T
GIVE UP**

JC019

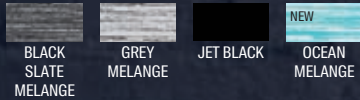
GIRLIE CROSS BACK CROP TOP

NEW
COLOUR

Fabric: 92% Polyester /
8% Elastane

Weight: 210gsm Size: XS-XL

The printable elasticated band
and feature strapped back
ensures you look stylish while
pushing your limits.



FEATURES:

Cross-strap detail at back
Double layer front for extra support
Printable elastic at band
Scooped neckline



2 WAY STRETCH



QUICK DRY



LIGHTWEIGHT



JC078

GIRLIE COOL DYNAMIC LEGGINGS

NEW
COLOUR

Fabric: 92% Polyester /
8% Elastane

Weight: 210gsm Size: XS-XL

The ultimate in fitness fashion for
2020, leggings make a statement
while providing high performance.



FEATURES:

Contrast panels
Flat lock stitching for comfort
Printable elastic at waist
Pockets in side panels



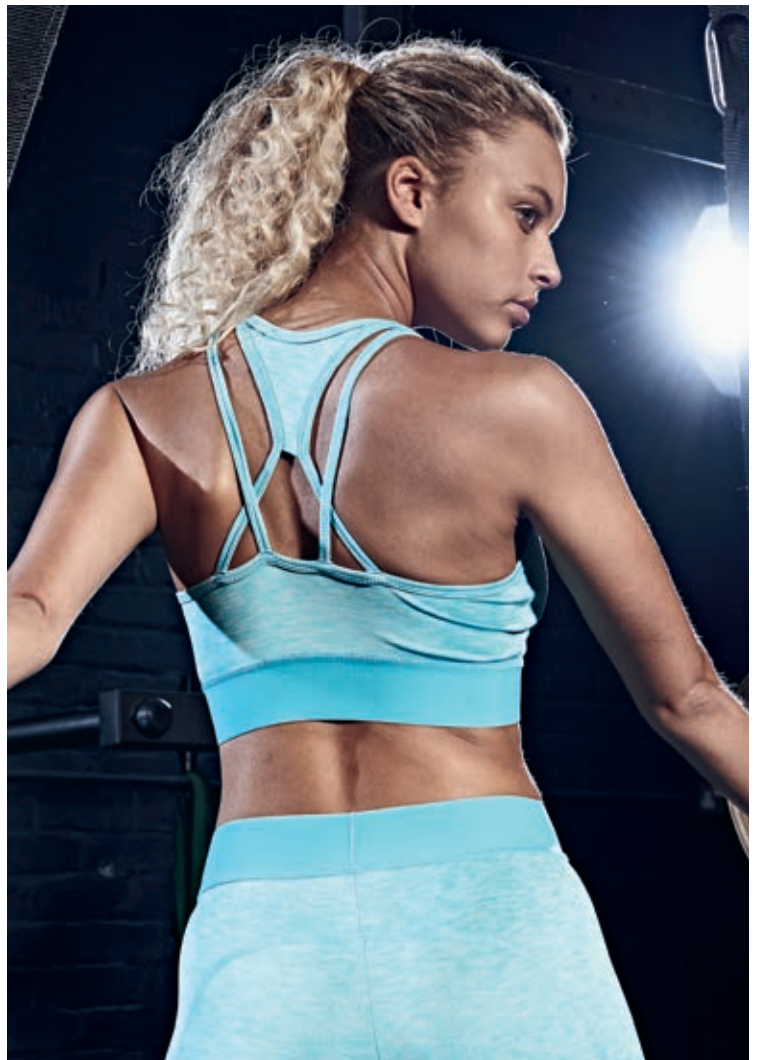
2 WAY STRETCH



QUICK DRY



LIGHTWEIGHT



A woman with blonde curly hair, wearing a light blue two-piece athletic set and black sneakers, stands in a gym. She is holding a black resistance band with wooden rings. The background is a dark brick wall. The text 'PUSH THROUGH' is overlaid in large, bold, white letters at the bottom left.

**PUSH
THROUGH**



JC004

COOL URBAN MARL T

Fabric: 100% Polyester
Weight: 155gsm Size: XS-XXL

For the ultimate urban sports style this bold T was designed with function and form in mind. The Cool Urban Marl T has a relaxed fit ideal to make a statement at the gym or the city streets.



BLACK
URBAN
MARL



GREY
URBAN
MARL



NAVY
URBAN
MARL

FEATURES:

- Relaxed sports fit
- Set in sleeve design
- Smooth marl performance fabric
- Twin needle stitching detail



2 WAY STRETCH



QUICK DRY



WICKING



LIGHTWEIGHT





**BE YOUR
BEST**

JC110

COOL URBAN FITNESS T

Fabric: 60% Cotton /
40% Polyester

Weight: 160gsm Size: XS-XXL

Boost your workout style with the Cool Urban Fitness T. The cotton polyester blended T provides maximum comfort and works as well outside the gym as it does inside.



ARCTIC
WHITE



COBALT
NAVY



IRON GREY



MINERAL
GREEN



JET BLACK

FEATURES:

Active fit
Cotton polyester blended fabric
for ultimate comfort
Self-fabric taped back neck
Twin needle stitching detail



2 WAY STRETCH



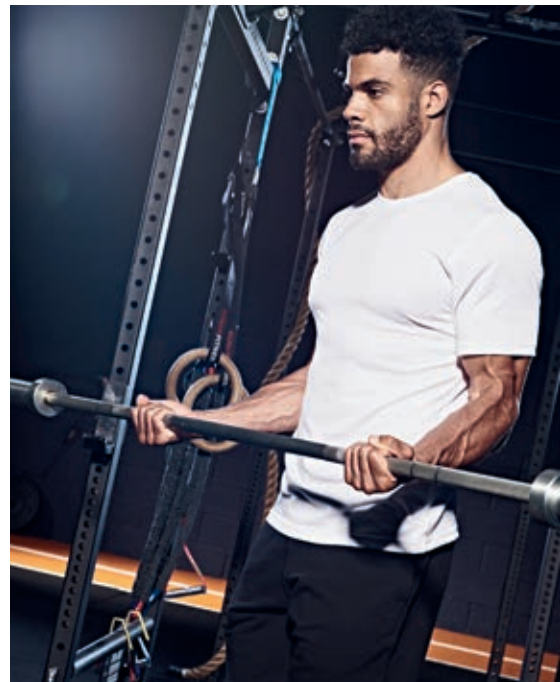
QUICK DRY



WICKING



LIGHTWEIGHT



HARD WORK PAYS OFF



JC030

COOL-FLEX 1/2 ZIP TOP

Fabric: 87% Polyester /
13% Elastane

Weight: 280gsm Size: S-XXL

For when you need more protection to maximise your performance, the Cool-Flex 1/2 Zip Top is perfect as a base or mid layer.



FRENCH
NAVY



JET BLACK



SILVER
GREY

FEATURES:

Active fit with reflective details
Raglan sleeve for ease of movement
1/2 zip with stand up collar for ventilation
Chin guard for protection



4 WAY STRETCH



QUICK DRY



WICKING



LIGHTWEIGHT



JC035

GIRLIE COOL-FLEX 1/2 ZIP TOP

Fabric: 87% Polyester /
13% Elastane

Weight: 280gsm Size: XS-XL

For maximum performance, the Girlie Cool-Flex Long Sleeve top is the ultimate base or mid layer.



FRENCH
NAVY



JET BLACK



SILVER
GREY

FEATURES:

Active fit with reflective details
Raglan sleeve for ease of movement
1/2 zip with stand up collar for ventilation
Chin guard for protection



4 WAY STRETCH



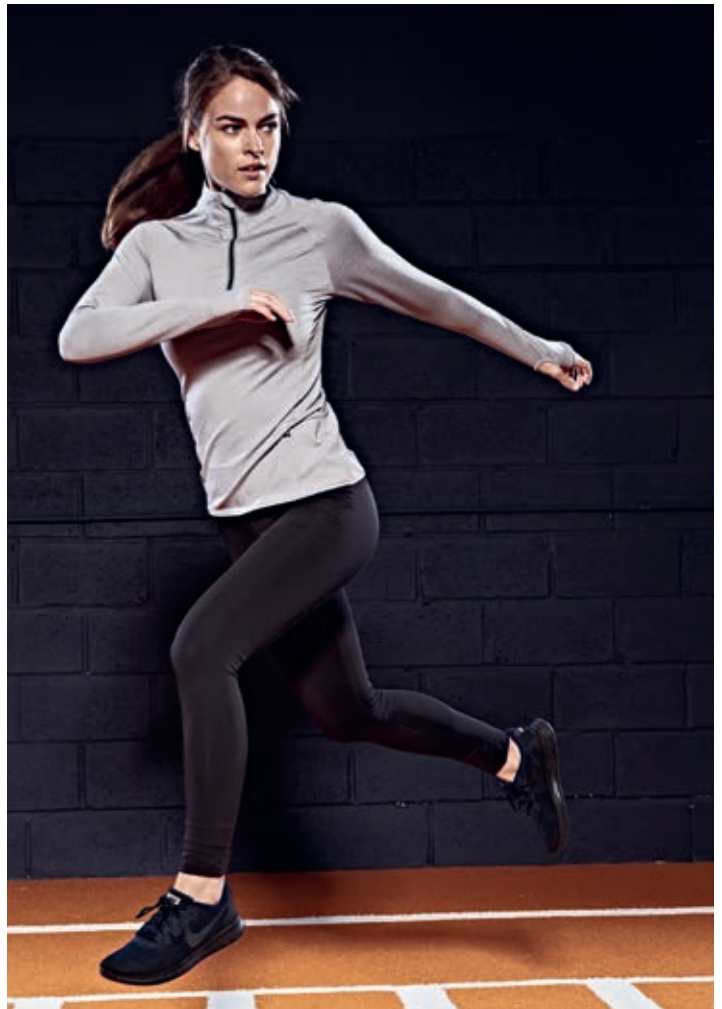
QUICK DRY



WICKING



LIGHTWEIGHT



A man with dark, curly hair and a beard is captured in a dynamic running pose. He is wearing a light grey long-sleeved athletic top with a black zipper, black shorts, and black sneakers. He is running on a brown track with white lane markings. The background is a dark, textured brick wall. The lighting is dramatic, highlighting his muscles and the texture of his clothing.

**STAY
FOCUSSED**



JC053

URBAN SLEEVELESS MUSCLE HOODIE

Fabric: 60% Polyester /
35% Cotton / 5% Elastane
Weight: 240gsm Size: S-XXL

Cut to flatter your physique, our Urban Sleeveless Muscle Hoodie maximises range of movement through dropped armhole style and our Urban Cool 4-way stretch fabric.



JET BLACK



SPORTS GREY

FEATURES:

- Active fit
- Ultimate 4-way stretch for ease of movement
- Sports panelling
- Attached two panel hood



4 WAY STRETCH



WICKING



LIGHTWEIGHT



40+ UPF

URBAN
COOL
UNIVERSAL STYLE

A full-page photograph of a muscular man with a beard and short dark hair, wearing a grey sleeveless hoodie and grey athletic pants. He is standing in a gym, holding a silver barbell with his right hand. The background is a dark brick wall. The lighting is dramatic, highlighting his physique. In the bottom left corner, the text 'REACH YOUR GOALS' is written in large, bold, white letters.

**REACH
YOUR
GOALS**



JC054

GIRLIE CROSS BACK HOODIE

Fabric: 60% Polyester / 35% Cotton / 5% Elastane
 Weight: 240gsm Size: XS-XL

Designed to take you from rest day to the gym, our Girlie Cool Cross Back Hoodie offers maximum comfort with maximum style.



FEATURES:
 4 way stretch fabric
 Drop curve hem at front
 Wicking quick dry fabric
 Unique cross back styling



4 WAY STRETCH



WICKING



LIGHTWEIGHT



40+ UPF



A woman with blonde curly hair in a high ponytail is shown from the back and side. She is wearing a black hooded sweatshirt with the word 'UrbanCool' printed in white on the back. She is also wearing grey and black patterned leggings. The background is a dark gym setting with metal racks and a wooden ring.

UrbanCool

**WORK
HARDER**

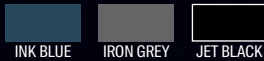
JC166

GIRLIE COOL SEAMLESS CROP TOP

Fabric: 92% Nylon /
8% Elastane

Weight: 300gsm Size: XS-XL

Designed to support while you push your limits! Unique seamless styling for added comfort lets you stand out while you work out.



FEATURES:

Racer back design and scoop neckline
Wide under band for secure fit
Padded cups for support
Self binding fabric around neckline and armholes



2 WAY STRETCH



QUICK DRY



WICKING



LIGHTWEIGHT

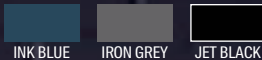
JC167

GIRLIE COOL SEAMLESS LEGGING

Fabric: 92% Nylon /
8% Elastane

Weight: 300gsm Size: XS-XL

Designed to support while you push your limits! Unique seamless styling for added comfort lets you stand out while you work out.



FEATURES:

Tight fit for support
High waisted with wide waistband
Unique seamless design for added shape
Seamless construction for ease of movement and comfort



2 WAY STRETCH



QUICK DRY



WICKING



LIGHTWEIGHT



**TRAIN
MORE**






JustCool[®]

AWDis

www.justcoolbyawdis.com

 [@justcoolbyawdis](https://www.facebook.com/justcoolbyawdis)

 [@justcoolbyawdis](https://www.instagram.com/justcoolbyawdis)

 [@justcoolbyawdis](https://www.twitter.com/justcoolbyawdis)