



2020





2020

**NEW FOR 2020**

PAGE 4

**FEEL GOOD RANGE**

PAGE 6

**FASHION RANGE**

TEES + VESTS PAGE 14

SHORTS + LEGGINGS PAGE 32

JEANS + SHIRTS PAGE 36

POLOS PAGE 38

SWEATS + OUTERWEAR PAGE 42

LOUNGEWEAR PAGE 52

**SF MINNI RANGE**

PAGE 56

**BACK OF THE BOOK**

PAGE 70



SF254 PAGE 21



SF082 PAGE 55



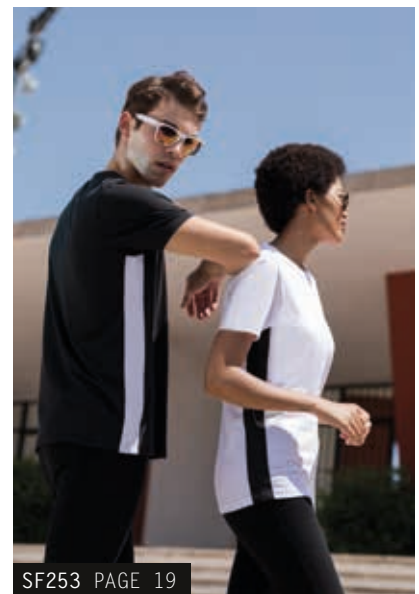
SM083 PAGE 54



SF259 PAGE 25



SF423 PAGE 47



SF253 PAGE 19



IT JUST GETS BETTER  
11 NEW ON-TREND STYLES  
FOR 2020

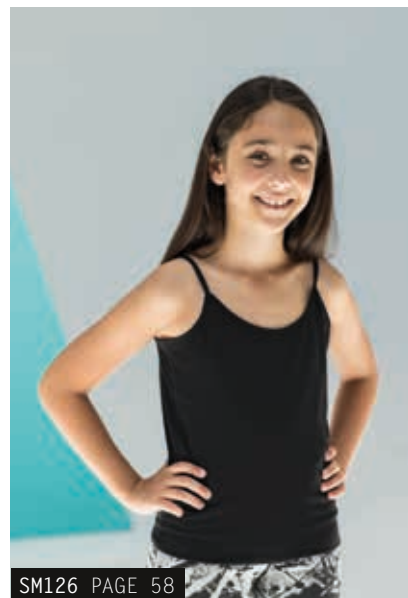
SK516 PAGE 49



SK426/SK427 PAGE 35



SM426/SM427 PAGE 61



SM126 PAGE 58



# FEEL GOOD

16 STYLES, 26 COLOURS  
SOFT STRETCH FABRIC.  
SUPREME FINISH.  
FEELS GOOD.



SF123 MEN'S FEEL GOOD STRETCH VEST (PAGE 12)  
SK127 WOMEN'S FEEL GOOD STRETCH  
CONTRAST STRAPPY VEST (PAGE 13)  
SK122 WOMEN'S FEEL GOOD STRETCH V (PAGE 10)  
SK124 WOMEN'S FEEL GOOD STRETCH  
LONG SLEEVED T (PAGE 11)  
SF121 MEN'S FEEL GOOD STRETCH T (PAGE 9)

# THE FEEL GOOD RANGE

**MEN**  
**SF121**  
MEN'S FEEL GOOD STRETCH T



**WOMEN**  
**SK121**  
WOMEN'S FEEL GOOD STRETCH T



**MINNI**  
**SM121**  
KIDS' FEEL GOOD STRETCH T



**MEN**  
**SF122**  
MEN'S FEEL GOOD STRETCH V



**WOMEN**  
**SK122**  
WOMEN'S FEEL GOOD STRETCH V



**MEN**  
**SF123**  
MEN'S FEEL GOOD STRETCH VEST



**WOMEN**  
**SK123**  
WOMEN'S FEEL GOOD STRETCH VEST



**MINNI**  
**SM123**  
KIDS' FEEL GOOD STRETCH VEST



**MEN**  
**SF124**  
MEN'S FEEL GOOD STRETCH LONG SLEEVED T



**WOMEN**  
**SK124**  
WOMEN'S FEEL GOOD STRETCH LONG SLEEVED T



**MEN**  
**SF125**  
MEN'S FEEL GOOD STRETCH ROLL NECK



**WOMEN**  
**SK125**  
WOMEN'S FEEL GOOD STRETCH ROLL NECK



**WOMEN**  
**SK126**  
WOMEN'S FEEL GOOD STRETCH SPAGHETTI VEST



**NEW MINNI**  
**SM126**  
KIDS' FEEL GOOD STRETCH SPAGHETTI VEST



**WOMEN**  
**SK127**  
WOMEN'S FEEL GOOD STRETCH CONTRAST STRAPPY VEST



**MINNI**  
**SM127**  
KIDS' FEEL GOOD STRETCH CONTRAST STRAPPY VEST



16 ON-TREND STYLES / 26 ON-TREND COLOURS





PRINTED FOR ILLUSTRATION PURPOSES; ALL GARMENTS ARE FREE FROM DECORATION

## SF121/SK121 MEN'S/WOMEN'S FEEL GOOD STRETCH T

96% COTTON, 4% ELASTANE  
165GSM SINGLE JERSEY, ENZYME FINISH  
(H.PINK + H.RED: 90% COTTON, 6% VISCOSE, 4% ELASTANE.  
H.GREY: 81% COTTON, 15% VISCOSE, 4% ELASTANE.  
H.CHARCOAL: 60% COTTON, 36% POLYESTER, 4% ELASTANE  
H.BLUE, H.NAVY + H.PURPLE: 65% POLYESTER, 30% COTTON,  
5% ELASTANE)  
MEN'S SF121 SIZES: XS-XXL (XS-BLACK + WHITE)  
WOMEN'S SK121 SIZES: XS-XXL

SK121 ONLY	BLACK	BRIGHT RED	BURGUNDY	CLAY	NEW
BABY PINK	BLACK	BRIGHT RED	BURGUNDY	CLAY	CORAL
SK121 ONLY	NEW	SK121 ONLY	GREEN	H.BLUE	H.CHARCOAL
DEEP PURPLE	DUSKY PINK	FUCHSIA	GREEN	H.BLUE	H.CHARCOAL
H.GREY	H.NAVY	SK121 ONLY	SK121 ONLY	H.RED	KHAKI
H.GREY	H.NAVY	H.PINK	H.PURPLE	H.RED	KHAKI
LIGHT STONE	NAVY	ROYAL	SAPPHIRE	STONE BLUE	SURF BLUE
WHITE	NAVY	ROYAL	SAPPHIRE	STONE BLUE	SURF BLUE
WHITE	NEW	ROYAL	SAPPHIRE	STONE BLUE	SURF BLUE
WHITE	YELLOW	ROYAL	SAPPHIRE	STONE BLUE	SURF BLUE





WORN WITH SK425/SF425 SLIM FIT CUFFED JOGGERS (PAGES 44-45)

## SK122/SF122 WOMEN'S/MEN'S FEEL GOOD STRETCH V

96% COTTON, 4% ELASTANE  
165GSM SINGLE JERSEY, ENZYME FINISH  
(H.GREY: 81% COTTON, 15% VISCOSE, 4% ELASTANE)  
WOMEN'S SK122 SIZES: XS-XXL  
MEN'S SF122 SIZES: S-XXL





**SK125/SF125**  
 WOMEN'S/MEN'S FEEL GOOD  
 STRETCH ROLL NECK

96% COTTON, 4% ELASTANE  
 165GSM SINGLE JERSEY, ENZYME FINISH  
 WOMEN'S SK125 SIZES: XS-XXL  
 MEN'S SF125 SIZES: S-XXL



BLACK



**SK124/SF124**  
 WOMEN'S/MEN'S FEEL GOOD  
 STRETCH LONG SLEEVED T

96% COTTON, 4% ELASTANE  
 165GSM SINGLE JERSEY, ENZYME FINISH  
 (H.GREY: 81% COTTON, 15% VISCOSE,  
 4% ELASTANE, H.BLUE: 65% POLYESTER,  
 30% COTTON, 5% ELASTANE)  
 WOMEN'S SK124 SIZES: XS-XXL  
 MEN'S SF124 SIZES: S-XXL



BLACK



BRIGHT RED



H.BLUE



H.GREY



WHITE



FEEL GOOD

**SF123/SK123**  
**MEN'S/WOMEN'S**  
**FEEL GOOD**  
**STRETCH VEST**

96% COTTON, 4% ELASTANE  
165GSM SINGLE JERSEY, ENZYME FINISH  
(H.GREY: 81% COTTON, 15% VISCOSE,  
4% ELASTANE)  
MEN'S SF123 SIZES: S-XXL  
WOMEN'S SK123 SIZES: XS-XXL





WORN WITH SK069 WOMEN'S RETRO SHORTS (PAGE 33)

# SK127 WOMEN'S FEEL GOOD STRETCH CONTRAST STRAPPY VEST

96% COTTON, 4% ELASTANE  
165GSM SINGLE JERSEY, ENZYME FINISH  
SIZES: XS-L



BLACK/WHITE WHITE/BLACK



# SK126 WOMEN'S FEEL GOOD STRETCH SPAGHETTI VEST

96% COTTON, 4% ELASTANE  
165GSM SINGLE JERSEY, ENZYME FINISH  
SIZES: XS-XL



BLACK



WORN WITH SK069 WOMEN'S RETRO SHORTS (PAGE 33)



FASHION  
TEES +  
VESTS



EMBROIDERED FOR ILLUSTRATION PURPOSES; ALL GARMENTS ARE FREE FROM DECORATION

## SF204 UNISEX LONG SLEEVED STRIPED T

100% COTTON  
160GSM SINGLE JERSEY  
SIZES: XXS-XXL



WHITE/  
OX. NAVY



## SF202 UNISEX STRIPED T

100% COTTON  
160GSM SINGLE JERSEY  
(H.GREY: 85% COTTON, 15% VISCOSE)  
SIZES: XXS-XXL



H.GREY/  
WHITE

WHITE/  
BURGUNDY

WHITE/  
OX. NAVY



ALSO FOR  
KIDS P.65



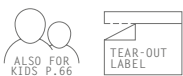
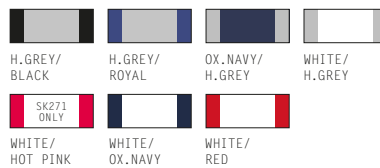
TEAR-OUT  
LABEL





## SF271/SK271 MEN'S/WOMEN'S LONG SLEEVED BASEBALL T

100% COTTON  
140GSM SINGLE JERSEY  
(H.GREY: 85% COTTON, 15% VISCOSE)  
MEN'S SF271 SIZES: XS-XXL  
WOMEN'S SK271 SIZES: XS-XL



# SF203 UNISEX WASHED BAND T

100% COTTON  
160GSM SINGLE JERSEY  
PIGMENT DYED, HEAVY STONE + HEAVY ENZYME WASHED  
SIZES: XXS-XXL



WASHED BLACK



EACH GARMENT HAS BEEN INDIVIDUALLY DYED, GIVING IT A UNIQUE FINISH. THE EFFECT MAY VARY FROM GARMENT TO GARMENT AND WILL VARY FURTHER AFTER WASHING, ADDING TO THE CHARACTER OF THIS STYLE. FIRST WASH SEPARATELY. THEN ALWAYS WASH WITH LIKE COLOURS. COLOUR MAY TRANSFER ONTO LIGHT COLOURS.



SF520 UNISEX WASHED TOUR SWEAT  
(PAGE 48)

PRINTED FOR ILLUSTRATION PURPOSES; ALL GARMENTS ARE FREE FROM DECORATION



**NEW SF253**  
UNISEX CONTRAST T

100% COTTON  
140GSM SINGLE JERSEY  
100% POLYESTER TAPING (WHITE TAPE  
SUITABLE FOR SUBLIMATION PRINTING)  
SIZES: XXS-XXL



BLACK/WHITE WHITE/BLACK



# SF514 UNISEX DROP SHOULDER SLOGAN TOP

100% COTTON  
220GSM SINGLE JERSEY  
GARMENT WASHED  
(H.GREY: 85% COTTON, 15% VISCOSE)  
SIZES: XXS-XXL



WORN WITH NEW SF453 UNISEX CONTRAST JOGGERS (PAGE 47)  
SK425 WOMENS SLIM FIT CUFFED JOGGERS (PAGES 44-45)  
SF600 MEN'S STRETCH SKINNI JEANS (PAGES 36-37)

PRINTED FOR ILLUSTRATION PURPOSES: ALL GARMENTS ARE FREE FROM DECORATION



**NEW SF254**  
UNISEX SCOOP NECK T

60% COTTON, 40% POLYESTER  
140GSM SINGLE JERSEY  
SIZES: XXS-XXL





**SK213**  
WOMEN'S SLOUNGE T

100% COTTON  
140GSM SINGLE JERSEY  
SIZES: S-XL



BLACK WHITE



**SK263**  
WOMEN'S SLOUNGE TOP

100% VISCOSE  
170GSM SINGLE JERSEY  
SIZES: XS-XL



BLACK



WORN WITH SK424 WOMEN'S REVERSIBLE WORKOUT LEGGINGS (PAGE 30 + 34)



SK233 WORN WITH NEW SK426 WOMEN'S FASHION LEGGINGS (PAGE 35)  
 SK237 WORN WITH SK425 WOMEN'S SLIM FIT CUFFED JOGGERS (PAGE 44-45)

## SK233 WOMEN'S DROP TAIL T

60% COTTON, 40% POLYESTER  
 140GSM SINGLE JERSEY  
 (H.GREY: 85% COTTON, 15% VISCOSE)  
 SIZES: XS-XXL



BLACK H.GREY WHITE



## SK237 WOMEN'S CROPPED BOXY T

60% COTTON, 40% POLYESTER  
 140GSM SINGLE JERSEY  
 SIZES: XXS-XL



BLACK WHITE





## SK104 WOMEN'S STRETCH VEST DRESS

96% COTTON, 4% ELASTANE  
190GSM SINGLE JERSEY  
SIZES: S-XL



## SK257 WOMEN'S T-SHIRT DRESS

100% COTTON  
180GSM SINGLE JERSEY  
SIZES: S-XL





# SF258

## MEN'S LONGLINE T

WITH DIPPED HEM

100% COTTON  
140GSM SINGLE JERSEY  
(H.CHARCOAL: 60% COTTON, 40% POLYESTER)  
SIZES: S-XXL



# NEW SF259

## MEN'S LONG SLEEVED LONGLINE T

WITH DIPPED HEM

100% COTTON  
140GSM SINGLE JERSEY  
SIZES: S-XXL



## SF236 MEN'S MUSCLE VEST

60% COTTON, 40% POLYESTER  
140GSM SINGLE JERSEY  
(H.GREY: 85% COTTON, 15% VISCOSE)  
SIZES: S-XXL



## SK234 WOMEN'S SLOUNGE VEST

60% COTTON, 40% POLYESTER  
140GSM SINGLE JERSEY  
SIZES: XS-XXL





**SF232/SK232**  
**MEN'S/WOMEN'S HIGH NECK**  
**SLASH ARMHOLE VEST**

60% COTTON, 40% POLYESTER  
 140GSM SINGLE JERSEY  
 (H.GREY: 85% COTTON, 15% VISCOSE)  
 SIZES: XS-XXL



BLACK



H.GREY



WHITE



\* PLEASE NOTE SOME STOCK OF SK232 MAY HAVE  
 WOVEN CUT-OUT BACK NECK LABELS. ALL RECENT  
 AND NEW PRODUCTION HAS TEAR-OUT LABELS

## SK236 WOMEN'S FASHION CROP TOP

96% POLYESTER, 4% ELASTANE  
240GSM SINGLE JERSEY (+ JACQUARD BAND)  
WHITE SUITABLE FOR SUBLIMATION PRINTING  
SIZES: XS-L



## SK170 WOMEN'S HIGH NECK CROP VEST

96% COTTON, 4% ELASTANE  
220GSM SINGLE JERSEY  
SIZES: XS-L



SK236 WORN WITH SK436 WOMEN'S FASHION BRIEFS (PAGE 29)  
AND SK425 WOMEN'S SLIM FIT CUFFED JOGGERS (PAGES 44-45)  
SK170 WORN WITH SK424 WOMEN'S REVERSIBLE WORKOUT LEGGINGS (PAGES 30 + 34)



**SK150**  
WOMEN'S STRETCH RACER-BACK TANK

96% COTTON, 4% ELASTANE  
240GSM 2X1 STRETCH RIB  
SIZES: S-L



BLACK WHITE



STRETCH

**SK436**  
WOMEN'S FASHION BRIEFS

96% POLYESTER, 4% ELASTANE  
100% COTTON GUSSET  
240GSM SINGLE JERSEY (+ JACQUARD BAND)  
WHITE SUITABLE FOR SUBLIMATION PRINTING  
SIZES: XS-L



BLACK/WHITE WHITE/WHITE



TEAR-OUT LABEL



STRETCH



SK236 NOW AVAILABLE  
IN BLACK/BLACK

SK436 SHOWN WITH SK236 WOMEN'S FASHION CROP TOP

# BODY + MIND EDIT

## SK424 WOMEN'S REVERSIBLE WORKOUT LEGGINGS

89% POLYESTER, 11% ELASTANE  
270GSM BONDED INTERLOCK  
SIZES: XS-XL



BLACK/PRINT



ALSO FOR KIDS P.60



TEAR-OUT LABEL



STRETCH

## SK240 WOMEN'S REVERSIBLE WORKOUT VEST

89% POLYESTER, 11% ELASTANE  
270GSM BONDED INTERLOCK  
SIZES: XS-XL



BLACK/PRINT



BRAND FREE



STRETCH





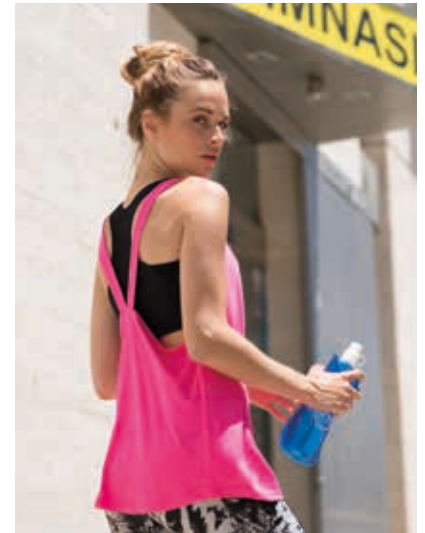
WORN WITH SK235 WOMEN'S WORKOUT CROPPED TOP (BELOW)

**SK241**  
WOMEN'S FASHION WORKOUT VEST

90% POLYESTER, 10% ELASTANE  
150GSM SINGLE JERSEY  
SIZES: XS-XXL



BLACK NEON PINK WHITE

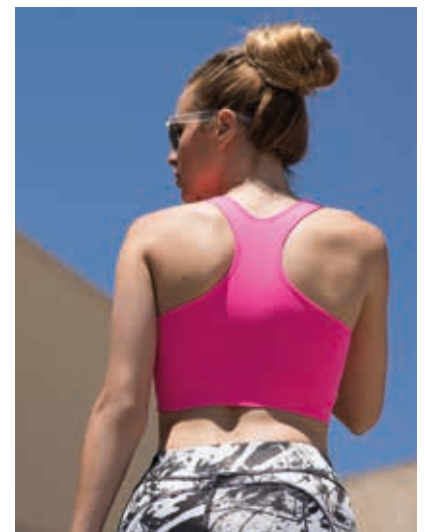


**SK235**  
WOMEN'S WORKOUT CROPPED TOP

BLACK: 65% POLYAMIDE,  
31% POLYESTER, 4% ELASTANE  
NEON PINK: 92% POLYAMIDE, 8% ELASTANE  
280GSM DOUBLE LAYER INTERLOCK  
SIZES: XS-L



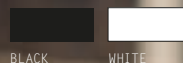
BLACK NEON PINK



# FASHION SHORTS + LEGGINGS

## SK062 WOMEN'S SHORTS

96% COTTON, 4% ELASTANE  
220GSM SINGLE JERSEY  
SIZES: S-L



BLACK

WHITE



ALSO FOR  
KIDS P. 62



STRETCH

WORN WITH SK121 WOMEN'S FEEL GOOD STRETCH T (PAGE 9)

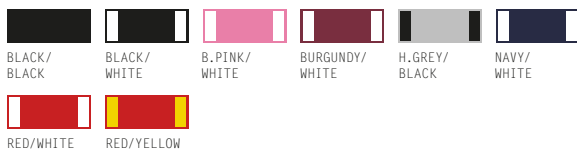




SK069 WORN WITH SK237 WOMEN'S CROPPED BOXY T, TUCKED IN (PAGE 23)  
 SF069 WORN WITH SF202 UNISEX STRIPED T (PAGE 16)

## SK069 WOMEN'S RETRO SHORTS

100% COTTON  
 220GSM SINGLE JERSEY  
 (H.GREY: 85% COTTON, 15% VISCOSE)  
 SIZES: XS-XXL



## SF069 MEN'S RETRO SHORTS

WITH POCKETS

100% COTTON  
 250GSM FRENCH TERRY  
 (H.GREY: 85% COTTON, 15% VISCOSE)  
 SIZES: S-XL



## SK068 WOMEN'S 3/4 LENGTH LEGGINGS

96% COTTON, 4% ELASTANE  
190GSM SINGLE JERSEY  
SIZES: XS-XXL



BLACK



## SK064 WOMEN'S LEGGINGS

96% COTTON, 4% ELASTANE  
190GSM SINGLE JERSEY  
SIZES: XS-XL



BLACK



## SK424 WOMEN'S REVERSIBLE WORKOUT LEGGINGS

89% POLYESTER, 11% ELASTANE  
270GSM BONDED INTERLOCK  
SIZES: XS-XL



BLACK/PRINT



SK068 WORN WITH SF514 DROP SHOULDER SLOGAN TOP (PAGE 20)  
SK064 WORN WITH SK515 WOMEN'S CROPPED SLOUNGE SWEAT (PAGE 49)  
SK424 WORN WITH SK516 WOMEN'S CROPPED SLOUNGE HOODY (PAGE 49)

**NEW**  
**SK426/SK427**  
WOMEN'S FASHION  
LEGGINGS/CYCLING  
SHORTS

88% POLYESTER, 12% ELASTANE  
280GSM SINGLE JERSEY (+ JACQUARD BAND)  
WHITE SUITABLE FOR SUBLIMATION PRINTING  
SIZES: XS-XL

SK426 ONLY

BLACK/WHITE

SK427 ONLY

BLACK/BLACK

ALSO FOR  
KIDS P. 61

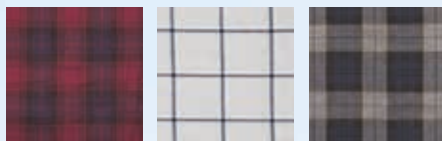
TEAR-OUT  
LABEL

STRETCH

WORN WITH SK236 WOMEN'S FASHION CROP TOP (PAGE 28)

## SF560 MEN'S BRUSHED CHECK CASUAL SHIRT

65% POLYESTER, 35% VISCOSE  
120GSM TWILL, BRUSHED  
SIZES: S-XXL



BURGUNDY CHECK    LIGHT GREY CHECK    NAVY CHECK



## SK600/SF600 WOMEN'S/MEN'S STRETCH SKINNI JEANS

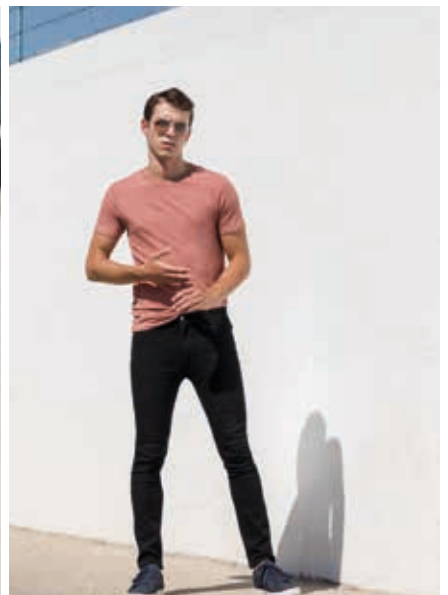
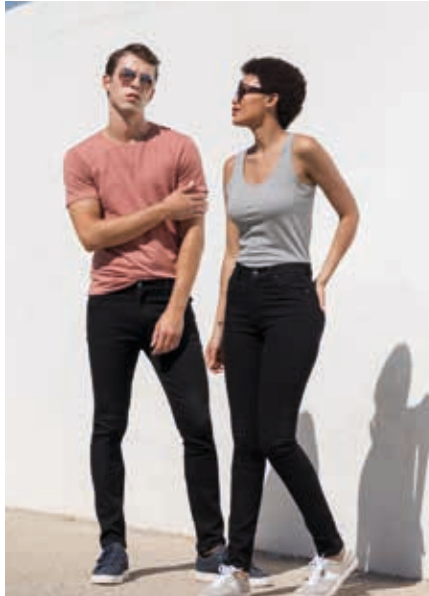
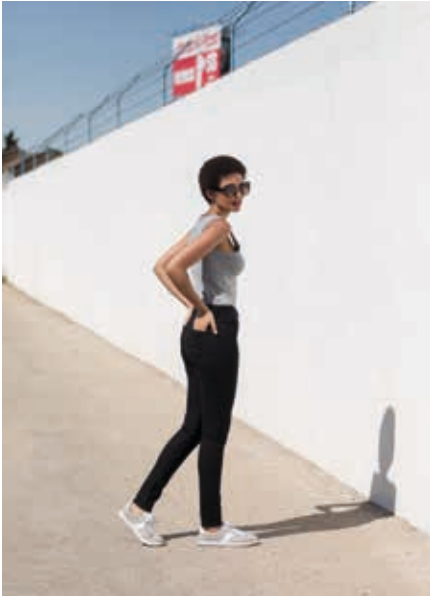
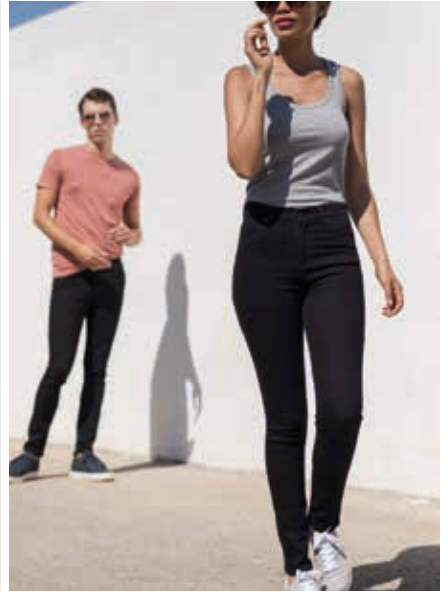
73% COTTON, 25% POLYESTER, 2% ELASTANE  
11.5OZ TWILL, GARMENT WASHED  
WOMEN'S SK600 SIZES: W26"/UK 8/EUR 36 – W36"/UK 18/EUR 46  
REG + LONG LENGTHS  
MEN'S SF600 SIZES: W28"/EUR 38 – W40"/EUR 50  
REG + LONG LENGTHS



BLACK



FASHION  
JEANS +  
SHIRTS



SF600 WORN WITH SF121 MEN'S FEEL GOOD STRETCH T (PAGE 9)  
SK600 WORN WITH SK123 WOMEN'S FEEL GOOD STRETCH VEST (PAGE 12)  
AND SK127 WOMEN'S FEEL GOOD STRETCH CONTRAST STRAPPY VEST (PAGE 13)

A woman with her hair in a bun, wearing a light blue short-sleeved polo shirt and black pants, is leaning against a light-colored wooden wall. She is looking off to the side. The lighting is soft, creating a shadow of her on the wall behind her.

# FASHION POLOS

# SK440/SF440 WOMEN'S/MEN'S FASHION POLO

100% COTTON  
180GSM SINGLE JERSEY  
WOMEN'S SK440 SIZES: XS-XL  
MEN'S SF440 SIZES: S-XXL





## SF042/SK042 MEN'S/WOMEN'S SHORT SLEEVED STRETCH POLO

96% COTTON, 4% ELASTANE  
200GSM MICRO PIQUE  
MEN'S SF042 SIZES: S-XXL  
WOMEN'S SK042 SIZES: S-XL





# SF044/SK044

## MEN'S/WOMEN'S LONG SLEEVED STRETCH POLO

96% COTTON, 4% ELASTANE  
200GSM MICRO PIQUE  
MEN'S SF044 SIZES: S-XXL  
WOMEN'S SK044 SIZES: S-XL



BLACK

WHITE



TEAR-OUT LABEL

STRETCH



FASHION  
SWEATS +  
OUTERWEAR





**SF525**  
UNISEX SLIM FIT  
SWEAT

60% COTTON, 40% POLYESTER  
250GSM BRUSHED BACK FLEECE  
(H.GREY: 75% COTTON 20% POLYESTER,  
5% VISCOSE)  
SIZES: XXS-XXL



BLACK BURGUNDY H.GREY NAVY



**SF425/SK425**  
MEN'S/WOMEN'S  
SLIM FIT CUFFED  
JOGGERS

60% COTTON, 40% POLYESTER  
250GSM BRUSHED BACK FLEECE  
(H.GREY: 75% COTTON 20% POLYESTER,  
5% VISCOSE)  
MEN'S SF425 SIZES: S-XXL  
WOMEN'S SK425 SIZES: XS-XL



BLACK H.GREY NAVY



**SF526**  
UNISEX SLIM FIT  
ZIP-THROUGH  
HOODY

60% COTTON, 40% POLYESTER  
250GSM BRUSHED BACK FLEECE  
(H.GREY: 75% COTTON, 20% POLYESTER,  
5% VISCOSE)  
SIZES: XXS-XXL



BLACK BURGUNDY H.GREY NAVY





WORN WITH NEW SF254 UNISEX SCOOP NECK T (PAGE 21)



**SF527**  
UNISEX OVERSIZED  
HOODY

60% COTTON, 40% POLYESTER  
250GSM BRUSHED BACK FLEECE  
(H.GREY: 75% COTTON, 20% POLYESTER, 5% VISCOSE)  
SIZES: XXS-XXL



BLACK



H.GREY



NAVY



**SF523**  
UNISEX CONTRAST  
SWEAT  
**NEW SF423**  
UNISEX CONTRAST  
JOGGERS

60% COTTON, 40% POLYESTER  
250GSM BRUSHED BACK FLEECE  
100% POLYESTER TAPING (SUITABLE FOR  
SUBLIMATION PRINTING)  
SIZES: XXS-XXL



BLACK/  
WHITE

BURGUNDY/  
WHITE

NAVY/  
WHITE





SF203 UNISEX WASHED BAND T (PAGE 18)

## SF520 UNISEX WASHED TOUR SWEAT

100% COTTON  
250GSM FRENCH TERRY  
PIGMENT DYED, HEAVY STONE  
+ HEAVY ENZYME WASHED  
SIZES: XXS-XXL



WASHED BLACK



EACH GARMENT HAS BEEN INDIVIDUALLY DYED, GIVING IT A UNIQUE FINISH. THE EFFECT MAY VARY FROM GARMENT TO GARMENT AND WILL VARY FURTHER AFTER WASHING, ADDING TO THE CHARACTER OF THIS STYLE. FIRST WASH SEPARATELY. THEN ALWAYS WASH WITH LIKE COLOURS. COLOUR MAY TRANSFER ONTO LIGHT COLOURS.

PRINTED FOR ILLUSTRATION PURPOSES; ALL GARMENTS ARE FREE FROM DECORATION



WORN WITH NEW SK427 WOMEN'S FASHION CYCLING SHORTS (PAGE 35)

## SK513 WOMEN'S SLOUNGE SWEAT

BLACK: 100% COTTON  
H.GREY: 85% COTTON, 15% VISCOSE  
OX.NAVY MARL: 60% COTTON,  
40% POLYESTER  
250GSM FRENCH TERRY  
SIZES: S-XL



BLACK



H.GREY



OX.NAVY MARL





**NEW SK516**

WOMEN'S CROPPED  
SLOUNGE HOODY

**SK515**

WOMEN'S CROPPED  
SLOUNGE SWEAT

BLACK: 80% COTTON, 20% POLYESTER  
H.GREY: 70% COTTON, 30% POLYESTER  
280GSM BRUSHED BACK FLEECE  
SIZES: XS-XL



BLACK H.GREY



TEAR-OUT  
LABEL



SK516 WORN WITH SK424 REVERSIBLE WORKOUT LEGGINGS (PAGES 30 + 34)  
SK515 WORN WITH NEW SK426 FASHION LEGGINGS (PAGE 35)



SF511 WORN WITH SF560 BRUSHED CHECK CASUAL SHIRT (PAGE 35)

### SF511 UNISEX BOMBER ZIP-THROUGH SWEAT

70% COTTON, 30% POLYESTER  
330GSM BRUSHED BACK FLEECE  
SIZES: XS-XXL



BLACK NAVY



### SF512 UNISEX BASEBALL JACKET WITH DETACHABLE HOOD

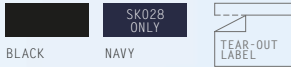
70% COTTON, 30% POLYESTER  
330GSM BRUSHED BACK FLEECE  
(H.GREY: 60% COTTON, 40% POLYESTER)  
SIZES: XS-XXL



BLACK/  
OFF WHITE NAVY/  
H.GREY

# SF028/SK028 MEN'S/WOMEN'S MICROFLEECE JACKET

100% POLYESTER  
200GSM MICROFLEECE  
MEN'S SF028 SIZES: S-XXL  
WOMEN'S SK028 SIZES: XS-XXL



SF028 WORN WITH SF423 UNISEX CONTRAST JOGGERS (PAGE 47)  
SK028 WORN WITH SK069 WOMEN'S RETRO SHORTS (PAGE 33)



## SF470 UNISEX ALL-IN-ONE

80% COTTON, 20% POLYESTER  
280GSM BRUSHED BACK FLEECE  
(H.GREY: 71% COTTON, 23% POLYESTER, 6% VISCOSE)  
SIZES: XXS/XS, S/M, L/XL

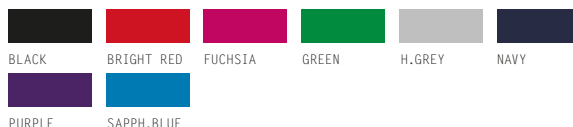


BLACK FUCHSIA H.GREY NAVY



## SM470 KIDS' ALL-IN-ONE

80% COTTON, 20% POLYESTER  
280GSM BRUSHED BACK FLEECE  
(H.GREY: 71% COTTON, 23% POLYESTER, 6% VISCOSE)  
SIZES (YEARS): 3-4, 5-6, 7-8, 9-10, 11-12, 13



BLACK BRIGHT RED FUCHSIA GREEN H.GREY NAVY  
PURPLE SAPPH.BLUE





# FASHION LOUNGEWEAR

# SK083/**NEW** SM083/SF083 WOMEN'S/KIDS'/MEN'S TARTAN LOUNGE PANTS

100% COTTON  
115GSM FLANNEL (TWILL WEAVE)  
WOMEN'S SK083 SIZES: XXS-XL  
KIDS' SM083 SIZES (YEARS):  
5-6, 7-8, 9-10, 11-12, 13  
MEN'S SF083 SIZES: XS-XXL



NAVY/GREEN CHECK



RED/NAVY CHECK



WHITE/MULTI CHECK  
(SF083 ONLY)



WHITE/PINK CHECK  
(SK083 + SM083)



TEAR-OUT LABEL



SK083 WORN WITH SK123 WOMEN'S FEEL GOOD STRETCH VEST (PAGE 12)  
SM083 WORN WITH SM121 KIDS' FEEL GOOD STRETCH T (PAGE 59)  
SF083 WORN WITH SF121 MEN'S FEEL GOOD STRETCH T (PAGE 9)

**SK082**  
**WOMEN'S**  
**TARTAN FRILL**  
**LOUNGE SHORTS**  
**NEW SF082**  
**MEN'S TARTAN**  
**LOUNGE SHORTS**

100% COTTON  
 115GSM FLANNEL (TWILL WEAVE)  
 WOMEN'S SK082 SIZES: XXS-XL  
 MEN'S SF082 SIZES: XS-XXL



NAVY/GREEN CHECK



RED/NAVY CHECK



WHITE/PINK CHECK  
 (SK082 ONLY)



SK082 WORN WITH SK123 WOMEN'S FEEL GOOD STRETCH VEST (PAGE 12)  
 SF082 WORN WITH SF121 MEN'S FEEL GOOD STRETCH T (PAGE 9)

**S F X**  
**LARKWOOD**

MATCHING BABY TARTAN LOUNGE PANTS (LW083)  
 AVAILABLE FROM LARKWOOD

VISIT: [LARKWOODCLOTHING.COM](http://LARKWOODCLOTHING.COM)  
 FOR MORE INFORMATION



**larkwood**   
 Baby and Toddler Collection



# S F M I N N I

SM123 KIDS' FEEL GOOD STRETCH VEST (PAGE 59)  
SM069 KIDS' RETRO SHORTS (PAGE 63)  
SM424 KIDS' REVERSIBLE WORKOUT LEGGINGS (PAGE 60)  
SM121 KIDS' FEEL GOOD STRETCH T (PAGE 59)  
SM425 KIDS' SLIM FIT CUFFED JOGGERS (PAGE 68)





# SM127

## KIDS' FEEL GOOD STRETCH CONTRAST STRAPPY VEST

96% COTTON, 4% ELASTANE  
165GSM SINGLE JERSEY, ENZYME FINISH  
SIZES (YEARS): 5-6, 7-8, 9-10, 11-12



BLACK/WHITE



# NEW SM126

## KIDS' FEEL GOOD STRETCH SPAGHETTI VEST

96% COTTON, 4% ELASTANE  
165GSM SINGLE JERSEY, ENZYME FINISH  
SIZES (YEARS): 5-6, 7-8, 9-10, 11-12



BLACK



WORN WITH SM424 KIDS' REVERSIBLE WORKOUT LEGGINGS (PAGE 60)

SM123 WORN WITH SM069 KIDS' RETRO SHORTS (PAGE 63)  
 AND SM424 KIDS' REVERSIBLE WORKOUT LEGGINGS (PAGE 60)  
 SM121 WORN WITH SM425 KIDS' SLIM FIT CUFFED JOGGERS (PAGE 68)  
 AND SM069 RETRO SHORTS (PAGE 63)



## SM123 KIDS' FEEL GOOD STRETCH VEST

96% COTTON, 4% ELASTANE  
 165GSM SINGLE JERSEY, ENZYME FINISH  
 SIZES (YEARS): 5-6, 7-8, 9-10, 11-12



BLACK WHITE



## SM121 KIDS' FEEL GOOD STRETCH T

96% COTTON, 4% ELASTANE  
 165GSM SINGLE JERSEY, ENZYME FINISH  
 SIZES (YEARS): 3-4, 5-6, 7-8, 9-10, 11-12



BLACK BRIGHT RED FUCHSIA NAVY ROYAL WHITE





## SM424 KIDS' REVERSIBLE WORKOUT LEGGINGS

89% POLYESTER, 11% ELASTANE  
270GSM BONDED INTERLOCK  
SIZES (YEARS): 5-6, 7-8, 9-10, 11-12



BLACK/PRINT



## SM241 KIDS' FASHION WORKOUT VEST

90% POLYESTER, 10% ELASTANE  
150GSM SINGLE JERSEY  
SIZES (YEARS): 5-6, 7-8, 9-10, 11-12



BLACK

NEON PINK

WHITE



# SM236

## KID'S FASHION CROP TOP

WITH DOUBLE LAYER FRONT  
 96% POLYESTER, 4% ELASTANE  
 240GSM SINGLE JERSEY (+ JACQUARD BAND)  
 WHITE SUITABLE FOR SUBLIMATION PRINTING  
 SIZES (YEARS): 5-6, 7-8, 9-10, 11-12

**NEW**

BLACK/BLACK    BLACK/WHITE    WHITE/WHITE

ALSO FOR WOMEN P.28

TEAR-OUT LABEL

STRETCH

# NEW SM426/SM427

## KID'S FASHION LEGGINGS/ CYCLING SHORTS

88% POLYESTER, 12% ELASTANE  
 280GSM SINGLE JERSEY (+ JACQUARD BAND)  
 WHITE SUITABLE FOR SUBLIMATION PRINTING  
 SIZES (YEARS): 5-6, 7-8, 9-10, 11-12

SM426 ONLY    SM427 ONLY

BLACK/WHITE    BLACK/BLACK

ALSO FOR WOMEN P.35

TEAR-OUT LABEL

STRETCH



**SM016**  
KIDS' TANK VEST

100% COTTON  
220GSM INTERLOCK  
SIZES (YEARS): 4-6. 7-9. 10-12



**SM062**  
KIDS' SHORTS

96% COTTON, 4% ELASTANE  
220GSM SINGLE JERSEY  
SIZES (YEARS): 5-6. 7-8. 9-10. 11-12



**SM170**  
KIDS' HIGH NECK CROP VEST

96% COTTON, 4% ELASTANE  
220GSM SINGLE JERSEY  
SIZES (YEARS): 5-6. 7-8. 9-10. 11-12



**SM064**  
KIDS' LEGGINGS

96% COTTON, 4% ELASTANE  
190GSM SINGLE JERSEY  
SIZES (YEARS):  
3-4. 5-6. 7-8. 9-10. 11-12





WORN WITH SM202 KIDS' STRIPED T (PAGE 65),  
SM121 KIDS' FEEL GOOD STRETCH T (PAGE 59)  
AND SM271 KIDS' LONG SLEEVED BASEBALL T (PAGE 66)

## SM069 KIDS' RETRO SHORTS

100% COTTON  
220GSM SINGLE JERSEY  
SIZES (YEARS): 5-6, 7-8, 9-10, 11-12



SF MINNI

# SM258 KIDS' LONGLINE T

WITH DIPPED HEM

100% COTTON  
140GSM SINGLE JERSEY  
SIZES (YEARS): 5-6, 7-8, 9-10, 11-12



BLACK WHITE







WORN WITH SM425 KIDS' SLIM FIT CUFFED JOGGERS (PAGE 68)

## SM202 KIDS' STRIPED T

100% COTTON  
160GSM SINGLE JERSEY  
SIZES (YEARS): 5-6, 7-8, 9-10, 11-12



WHITE/  
OX. NAVY

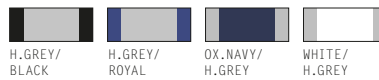




WORN WITH SM425 KIDS' SLIM FIT CUFFED JOGGERS (PAGE 68)

## SM271 KIDS' LONG SLEEVED BASEBALL T

100% COTTON  
140GSM SINGLE JERSEY  
(H.GREY: 85% COTTON, 15% VISCOSE)  
SIZES (YEARS): 5-6, 7-8, 9-10, 11-12



H.GREY/  
BLACK

H.GREY/  
ROYAL

OX.NAVY/  
H.GREY

WHITE/  
H.GREY

WHITE/  
HOT PINK

WHITE/  
OX.NAVY

WHITE/  
RED

ALSO FOR  
ADULTS P.17

TEAR-OUT  
LABEL



PRINTED FOR ILLUSTRATION PURPOSES; ALL GARMENTS ARE FREE FROM DECORATION

## SM514 KIDS' DROP SHOULDER SLOGAN TOP

100% COTTON  
220GSM SINGLE JERSEY  
SIZES (YEARS): 5-6, 7-8, 9-10, 11-12



BLACK

BRIGHT PINK

OX. NAVY/  
WHITE  
STRIPES

WHITE



## SM526 KIDS' SLIM FIT ZIP-THROUGH HOODY

60% COTTON, 40% POLYESTER  
250GSM BRUSHED BACK FLEECE  
(H.GREY: 75% COTTON, 20% POLYESTER, 5% VISCOSE)  
SIZES (YEARS): 5-6, 7-8, 9-10, 11-12



## SM425 KIDS' SLIM FIT CUFFED JOGGERS

60% COTTON, 40% POLYESTER  
250GSM BRUSHED BACK FLEECE  
(H.GREY: 75% COTTON, 20% POLYESTER, 5% VISCOSE)  
SIZES (YEARS): 5-6, 7-8, 9-10, 11-12



WORN WITH SM202 KIDS' STRIPED T (PAGE 65)

# SM470 KIDS' ALL-IN-ONE

80% COTTON, 20% POLYESTER  
280GSM BRUSHED BACK FLEECE  
(H.GREY: 71% COTTON, 23% POLYESTER, 6% VISCOSE)  
SIZES (YEARS): 3-4, 5-6, 7-8, 9-10, 11-12, 13



# ETHICS AND STANDARDS

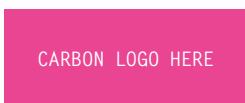
## ENVIRONMENTAL

Henbury are fully committed to the wellbeing and development of our planet which has encouraged big changes to our personal outlook and the way we trade. We aim to help our customers and make it easier to reduce the volume of waste going to landfill. Going forward, our products will be packaged in recycled plastic bags, which are recyclable at the end of life. Packaging components are being reduced by a huge 77% across shirts and we are reducing the number of products that are individually packaged. Finally, our bags will be made for reuse; they are resealable for ease of re-packaging and branding is being removed to allow ease of re-branding.

On top of this, our employees are making a conscious choice to go paperless and recycle all excess fabrics/garments.

It is our corporate responsibility to make an impact in reducing our carbon footprint. All of our marketing materials printed for 2020 have been carbon balanced helping reduce CO2 emissions and preserving ecologically endangered land with World Land Trust. By using FSC certified papers and printers, promoting responsible management of the world's forests, we are doing our part to make a change.

To find out more please visit: [carbonbalancedpaper.com](http://carbonbalancedpaper.com)



## MANUFACTURERS

We work with the very highest level of manufacturers developing strong, long-term partnerships to promote understanding of International Ethical Trading practices. Working with all our global suppliers to promote respect for workers' rights, ensuring workers are free from exploitation and discrimination, and enjoy conditions of freedom, security and equality. We fully recognise the importance of the people and the countries where we manufacture, and we require any associated manufacturer or supplier to share our commitment to fair and safe working practices. Our manufacturing locations are personally selected, inspected via an independent, fully recognised and accredited ethical auditing body and supported with continuous monitoring by our local representatives.

This ensures working conditions and practices are to the highest standard and within local government laws.

In addition to ensuring our high ethical standards are achieved, we support and sponsor a number of local charities within the communities with which we work and manufacture.

## CERTIFICATIONS

A further indication of our commitment to social responsibility is in the number of certifications that we hold. Specific information by style and clarification relating to various certifications and standards is available from us on request.



## STAY CONNECTED

For any questions about SF contact us at: [enquiries@sf-clothing.com](mailto:enquiries@sf-clothing.com) or visit [sf-clothing.com](http://sf-clothing.com)

## HENBURYBRANDS

For more great quality and style, check out the full range of brands at [henburybrands.com](http://henburybrands.com)

## SOCIAL

Keep in the loop with where we're going and the new trends we love!



## IMAGES

Get access to our logos, torso shots, and lifestyle photography: [cloud.henbury.com](http://cloud.henbury.com)

## MEET

Want to see and feel our range for yourself? We're exhibiting at the following trade shows:



Europe's leading trade fair for textile decoration and promotion  
**January 30 – February 01, 2020**  
**Messe Stuttgart, Germany**



Keep an eye out for social media updates on additional shows throughout the year.

If you'd like a visit from our brand rep, please contact [enquiries@sf-clothing.com](mailto:enquiries@sf-clothing.com)

# SIZE GUIDE AND BODY MEASUREMENTS

## UNISEX

UNISEX SIZES – TOPS	XXS	XS	S	M	L	XL	XXL
UK MEN'S SIZE - TO FIT	XXS	XS	S	M	L	XL	XXL
EUR MEN'S - CHEST - TO FIT	42-44	44-46	46-48	48-50	52	54-56	58
UK WOMEN'S - TO FIT	10	12	14	16	18	20	22
EUR WOMEN'S - TO FIT	38	40	42	44	46	48	50
CHEST - TO FIT - INCHES	32-34"	34-36"	36-38"	38-40"	42"	44-46"	48"
CHEST - TO FIT - CMS	81-86cm	86-91cm	91-96cm	96-101cm	107cm	112-117cm	122cm

UNISEX SIZES – BOTTOMS	XXS	XS	S	M	L	XL	XXL
UK MEN'S SIZE - TO FIT	XXS	XS	S	M	L	XL	XXL
EUR MEN'S - WAIST - TO FIT	38	40	42	44	46	48	50
UK WOMEN'S - TO FIT	10	12	14	16	18	20	22
EUR WOMEN'S - TO FIT	38	40	42	44	46	48	50
WAIST - TO FIT - INCHES	28"	30"	32"	34"	36"	38"	40"
WAIST - TO FIT - CMS	71cm	76cm	81cm	86cm	91cm	96cm	101cm
INSIDE LEG LENGTH - TO FIT REGULAR - INCHES	32"	32"	32"	32"	32"	32"	32"
INSIDE LEG LENGTH - TO FIT REGULAR - CM	81cm	81cm	81cm	81cm	81cm	81cm	81cm

## MEN

MEN'S SIZES (EXCL. JEANS)	XS	S	M	L	XL	XXL
EUR - CHEST - TO FIT	44-46	46-48	48-50	52	54-56	58
EUR - WAIST - TO FIT	40	42	44	46	48	50
CHEST - TO FIT - INCHES	34-36"	36-38"	38-40"	42"	44-46"	48"
CHEST - TO FIT - CMS	86-91cm	91-96cm	96-101cm	107cm	112-117cm	122cm
WAIST - TO FIT - INCHES	30"	32"	34"	36"	38"	40"
WAIST - TO FIT - CMS	76cm	81cm	86cm	91cm	96cm	101cm
INSIDE LEG LENGTH - TO FIT REGULAR - INCHES	32"	32"	32"	32"	32"	32"
INSIDE LEG LENGTH - TO FIT REGULAR - CMS	81cm	81cm	81cm	81cm	81cm	81cm

MEN'S SIZES (SF600 JEANS)	W28"	W30"	W32"	W34"	W36"	W38"	W40"
EUR - WAIST - TO FIT	38	40	42	44	46	48	50
WAIST - TO FIT - CMS	71cm	76cm	81cm	86cm	91cm	96cm	101cm
INSIDE LEG LENGTH - TO FIT REGULAR - INCHES	32"	32"	32"	32"	32"	32"	32"
INSIDE LEG LENGTH - TO FIT REGULAR - CM	81cm	81cm	81cm	81cm	81cm	81cm	81cm
INSIDE LEG LENGTH - TO FIT LONG - INCHES	34"	34"	34"	34"	34"	34"	34"
INSIDE LEG LENGTH - TO FIT LONG - CM	86cm	86cm	86cm	86cm	86cm	86cm	86cm

## WOMEN

WOMEN'S SIZES (EXCL. JEANS)	XXS	XS	S	M	L	XL	XXL
UK - TO FIT	6	8	10	12	14	16	18
EUR - TO FIT	34	36	38	40	42	44	46
CHEST - TO FIT - INCHES	28-30"	30-32"	32-34"	34-36"	36-38"	38-40"	40-42"
CHEST - TO FIT - CMS	71-76cm	76-81cm	81-86cm	86-91cm	91-96cm	96-101cm	101-107cm
WAIST - TO FIT - INCHES	24"	26"	28"	30"	32"	34"	36"
WAIST - TO FIT - CM	61cm	66cm	71cm	76cm	81cm	86cm	91cm
INSIDE LEG LENGTH - TO FIT REGULAR - INCHES	32"	32"	32"	32"	32"	32"	32"
INSIDE LEG LENGTH - TO FIT REGULAR - CM	81cm	81cm	81cm	81cm	81cm	81cm	81cm

WOMEN'S SIZES (SF600 JEANS)	W26"	W28"	W30"	W32"	W34"	W36"
UK - TO FIT	8	10	12	14	16	18
EUR - TO FIT	36	38	40	42	44	46
WAIST - TO FIT - CM	66cm	71cm	76cm	81cm	86cm	91cm
INSIDE LEG LENGTH - TO FIT REGULAR - INCHES	32"	32"	32"	32"	32"	32"
INSIDE LEG LENGTH - TO FIT REGULAR - CM	81cm	81cm	81cm	81cm	81cm	81cm
INSIDE LEG LENGTH - TO FIT LONG - INCHES	34"	34"	34"	34"	34"	34"
INSIDE LEG LENGTH - TO FIT LONG - CM	86cm	86cm	86cm	86cm	86cm	86cm

## KIDS

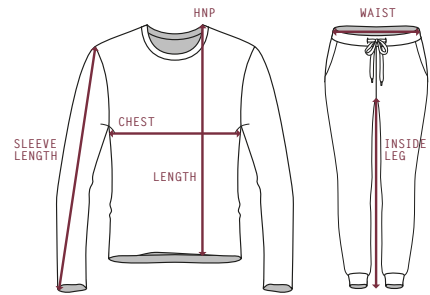
KIDS' AGES	3/4	4/6	5/6	7/8	7/9	9/10	10/12	11/12	13
HEIGHT - CMS	104cm	104-116cm	116cm	128cm	122-134cm	140cm	140-152cm	152cm	164cm
CHEST - INCHES	22"	22-24"	24"	26"	25-27"	28"	28.75-30.75"	30.5"	33"
CHEST - CMS	56cm	56-61cm	61cm	66cm	63-69cm	71cm	73-78cm	78cm	84cm
WAIST - INCHES	21"	21.25-22.5"	22"	23"	23-24.5"	24.5"	25.25-26.75"	26"	27.5"
WAIST - CMS	54cm	54-57cm	56cm	58cm	58-62cm	62cm	64-68cm	66cm	70cm

PLEASE NOTE THAT HEIGHT IS A BETTER INDICATION OF FIT THAN AGE.

THE FIT OF A GARMENT MAY VARY DEPENDING ON THE CUT, STYLE AND FABRIC.  
IT IS ADVISABLE TO USE ACTUAL BODY MEASUREMENTS RATHER THAN MEASURING OVER CLOTHES.

# GARMENT SPECIFICATIONS

ALL MEASUREMENTS ARE IN CM. CHEST IS MEASURED 2.5CM BELOW ARMHOLE.



## S F MEN + UNISEX

SF028 MEN'S MICROFLEECE JACKET		S	M	L	XL	XXL		TOLS +/-	
CHEST		45.0	48.0	51.0	54.0	57.0		1.5	
LENGTH		70.0	72.0	74.0	76.0	78.0		2.0	
SLEEVE LENGTH		61.0	62.0	63.0	64.0	65.0		2.0	
SF042 MEN'S SHORT SLEEVED STRETCH POLO		S	M	L	XL	XXL		TOLS +/-	
CHEST		44.0	48.0	52.0	56.0	60.0		1.5	
LENGTH		65.5	69.5	73.5	76.5	79.5		2.0	
SLEEVE LENGTH		20.0	21.0	22.0	23.0	24.0		1.5	
SF044 MEN'S LONG SLEEVED STRETCH POLO		S	M	L	XL	XXL		TOLS +/-	
CHEST		46.0	49.0	52.0	55.0	59.0		1.5	
LENGTH		65.5	69.5	73.5	76.5	79.5		2.0	
SLEEVE LENGTH		60.0	62.0	63.0	64.0	65.0		1.5	
SF069 MEN'S RETRO SHORTS		S	M	L	XL			TOLS +/-	
WAIST		36.0	38.0	40.0	42.0			1.5	
INSIDE LEG		13.5	14.0	14.5	15.0			1.0	
NEW SF082 MEN'S TARTAN LOUNGE SHORTS		XS	S	M	L	XL	XXL	TOLS +/-	
	WAIST	34.0	37.0	40.0	43.0	46.0	49.0	1.5	
	INSIDE LEG	14.0	14.0	14.0	14.0	14.0	14.0	1.0	
SF083 MEN'S TARTAN LOUNGE PANTS		XS	S	M	L	XL	XXL	TOLS +/-	
	WAIST	34.0	37.0	40.0	43.0	46.0	49.0	1.5	
	INSIDE LEG	78.0	78.0	78.0	79.0	79.0	79.0	2.0	
SF121 MEN'S FEEL GOOD STRETCH T		XS	S	M	L	XL	XXL	TOLS +/-	
	CHEST	42.0	45.0	48.0	51.0	54.0	57.0	1.5	
	LENGTH	68.0	70.0	72.0	74.0	76.0	78.0	2.0	
	SLEEVE LENGTH	17.0	17.5	18.5	19.5	20.5	21.5	1.0	
SF122 MEN'S FEEL GOOD STRETCH V		S	M	L	XL	XXL		TOLS +/-	
	CHEST	45.0	48.0	51.0	54.0	57.0		1.5	
	LENGTH	70.0	72.0	74.0	76.0	78.0		2.0	
	SLEEVE LENGTH	17.5	18.5	19.5	20.5	21.5		1.5	
SF123 MEN'S FEEL GOOD STRETCH VEST		S	M	L	XL	XXL		TOLS +/-	
	CHEST	45.0	48.0	51.0	54.0	57.0		1.5	
	LENGTH	70.0	72.0	74.0	76.0	78.0		2.0	
SF124 MEN'S FEEL GOOD STRETCH LONG SLEEVED T		S	M	L	XL	XXL		TOLS +/-	
	CHEST	46.0	49.0	52.0	55.0	58.0		1.5	
	LENGTH	70.0	72.0	74.0	76.0	78.0		2.0	
	SLEEVE LENGTH	66.0	67.0	68.0	69.0	70.0		2.0	
SF125 MEN'S FEEL GOOD STRETCH ROLL NECK		S	M	L	XL	XXL		TOLS +/-	
	CHEST	45.0	48.0	51.0	54.0	57.0		1.5	
	LENGTH	71.0	73.0	75.0	77.0	79.0		2.0	
	SLEEVE LENGTH	67.0	68.0	69.0	70.0	71.0		2.0	
SF202 UNISEX STRIPED T		XXS	XS	S	M	L	XL	XXL	TOLS +/-
	CHEST	45.0	48.0	51.0	54.0	57.0	60.0	63.0	1.5
	LENGTH	68.0	70.0	72.0	74.0	76.0	78.0	80.0	2.0
	SLEEVE LENGTH	17.0	18.0	19.0	20.0	21.0	22.0	23.0	1.5
SF203 UNISEX WASHED BAND T		XXS	XS	S	M	L	XL	XXL	TOLS +/-
	CHEST	47.5	50.5	53.5	56.5	59.5	62.5	65.5	2.0
	LENGTH	66.0	68.0	70.0	72.0	74.0	76.0	78.0	2.5
	SLEEVE LENGTH	19.0	20.0	21.0	22.0	23.0	24.0	25.0	1.5
SF204 UNISEX LONG SLEEVED STRIPED T		XXS	XS	S	M	L	XL	XXL	TOLS +/-
	CHEST	43.0	46.0	49.0	52.0	55.0	58.0	61.0	2.0
	LENGTH	66.0	68.0	70.0	72.0	74.0	76.0	78.0	2.0
	SLEEVE LENGTH	62.0	63.0	64.0	65.0	66.0	67.0	68.0	2.0
SF232 MEN'S HIGH NECK SLASH ARMHOLE VEST		XS	S	M	L	XL	XXL	TOLS +/-	
	CHEST	47.0	50.0	53.0	56.0	59.0	62.0	1.5	
	LENGTH	74.0	75.5	77.0	78.5	79.5	80.5	2.0	
SF236 MEN'S MUSCLE VEST		S	M	L	XL	XXL		TOLS +/-	
	CHEST	47.0	50.0	53.0	56.0	59.0		1.5	
	LENGTH	72.0	74.0	76.0	78.0	80.0		2.0	
NEW SF253 UNISEX CONTRAST T		XXS	XS	S	M	L	XL	XXL	TOLS +/-
	CHEST	45.0	48.0	51.0	54.0	57.0	60.0	63.0	2.0
	LENGTH	69.0	71.0	73.0	75.0	77.0	79.0	81.0	2.0
	SLEEVE LENGTH	19.0	20.0	21.0	22.0	23.0	24.0	25.0	1.5



<b>NEW</b>	SF254 UNISEX SCOOP NECK T	XXS	XS	S	M	L	XL	XXL	TOLS +/-
	CHEST	46.0	48.0	51.0	54.0	57.0	60.0	63.0	2.0
	LENGTH	66.5	68.5	69.5	70.5	71.5	72.5	73.5	2.0
	SLEEVE LENGTH	18.0	19.0	20.0	21.0	22.0	23.0	24.0	1.5
	SF258 MEN'S LONGLINE T WITH DIPPED HEM			S	M	L	XL	XXL	TOLS +/-
	CHEST			51.0	54.0	57.0	60.0	63.0	1.5
	LENGTH (FRONT)			81.0	83.0	85.0	87.0	89.0	2.0
	LENGTH (BACK)			85.0	87.0	89.0	91.0	93.0	2.0
	SLEEVE LENGTH			20.5	21.5	22.5	23.5	24.5	1.5
<b>NEW</b>	SF259 MEN'S LONG SLEEVED LONGLINE T WITH DIPPED HEM			S	M	L	XL	XXL	TOLS +/-
	CHEST			51.0	54.0	57.0	60.0	63.0	2.0
	LENGTH (FRONT)			81.0	83.0	85.0	87.0	89.0	2.0
	LENGTH (BACK)			84.0	86.0	88.0	90.0	92.0	2.0
	SLEEVE LENGTH			62.0	63.0	64.0	65.0	66.0	2.0
	SF271 MEN'S LONG SLEEVED BASEBALL T		XS	S	M	L	XL	XXL	TOLS +/-
	CHEST		46.5	49.5	52.5	55.5	58.5	61.5	1.5
	LENGTH		68.5	70.5	72.5	74.5	76.5	78.5	2.0
	SLEEVE LENGTH (FROM HNP)		75.5	78.5	80.0	81.5	83.0	84.5	2.0
<b>NEW</b>	SF423 UNISEX CONTRAST JOGGERS	XXS	XS	S	M	L	XL	XXL	TOLS +/-
	WAIST	33.0	35.0	37.0	39.0	41.0	43.0	45.0	1.5
	INSIDE LEG	70.0	71.0	71.0	71.0	72.0	72.0	72.0	2.0
	SF425 MEN'S SLIM FIT CUFFED JOGGERS			S	M	L	XL	XXL	TOLS +/-
	WAIST			37.5	39.5	41.5	43.5	45.5	1.5
	INSIDE LEG			75.0	75.0	76.0	76.0	76.0	2.0
	SF440 MEN'S FASHION POLO			S	M	L	XL	XXL	TOLS +/-
	CHEST			48.0	51.0	54.0	57.0	60.0	1.5
	LENGTH			71.5	74.0	76.5	79.0	81.5	2.0
	SLEEVE LENGTH			23.0	24.0	25.0	26.0	27.0	1.5
	SF470 UNISEX ALL-IN-ONE		XXS/XS		S/M		L/XL		TOLS +/-
	CHEST		49.0		55.0		61.0		1.5
	LENGTH		146.0		154.0		162.0		3.0
	SLEEVE LENGTH		64.0		66.5		69.0		2.0
	WAIST		48.0		54.0		60.0		1.5
	INSIDE LEG		71.0		72.0		73.0		2.0
	SF511 UNISEX BOMBER ZIP-THROUGH SWEAT		XS	S	M	L	XL	XXL	TOLS +/-
	CHEST		48.0	51.0	54.0	57.0	60.0	63.0	1.5
	LENGTH		68.0	70.5	73.0	75.5	78.0	80.5	2.0
	SLEEVE LENGTH		65.0	66.5	68.0	69.5	71.0	72.5	2.0
	SF512 UNISEX BASEBALL JACKET WITH DETACHABLE HOOD		XS	S	M	L	XL	XXL	TOLS +/-
	CHEST		50.5	53.0	55.5	58.0	60.5	63.0	1.5
	LENGTH		64.0	67.0	70.0	74.0	76.0	78.0	2.0
	SLEEVE LENGTH		59.0	61.0	63.0	65.0	66.0	67.0	2.0
	SF514 UNISEX DROP SHOULDER SLOGAN TOP	XXS	XS	S	M	L	XL	XXL	TOLS +/-
	CHEST	49.5	52.5	55.5	58.5	61.5	64.5	67.5	1.5
	LENGTH (FRONT)	65.0	67.0	69.0	70.0	72.0	74.0	76.0	2.0
	LENGTH (BACK)	70.0	72.0	74.0	76.0	77.0	79.0	81.0	2.0
	SLEEVE LENGTH	43.0	44.0	45.0	46.0	47.0	47.5	48.0	1.5
	SHOULDER TO SHOULDER	76.0	78.0	80.0	82.0	84.0	86.0	88.0	2.0
	SF520 UNISEX WASHED TOUR SWEAT	XXS	XS	S	M	L	XL	XXL	TOLS +/-
	CHEST	53.0	56.0	59.0	62.0	65.0	68.0	71.0	2.0
	LENGTH	66.0	68.0	70.0	72.0	74.0	76.0	78.0	2.0
	SLEEVE LENGTH	61.0	62.0	63.0	64.0	65.0	66.0	67.0	2.0
	SF523 UNISEX CONTRAST SWEAT	XXS	XS	S	M	L	XL	XXL	TOLS +/-
	CHEST	53.0	56.0	59.0	62.0	65.0	68.0	71.0	2.0
	LENGTH	66.0	68.0	70.0	72.0	74.0	76.0	78.0	2.0
	SLEEVE LENGTH (FROM HNP)	72.5	75.0	77.5	80.0	82.5	85.0	87.5	2.0
	SF525 UNISEX SLIM FIT SWEAT	XXS	XS	S	M	L	XL	XXL	TOLS +/-
	CHEST	44.0	47.0	50.0	53.0	56.0	59.0	62.0	1.5
	LENGTH	68.0	70.0	72.0	74.0	76.0	78.0	80.0	2.0
	SLEEVE LENGTH	76.0	78.0	80.0	82.0	84.0	86.0	88.0	2.0
	SF526 UNISEX SLIM FIT ZIP-THROUGH HOODY	XXS	XS	S	M	L	XL	XXL	TOLS +/-
	CHEST	45.0	48.0	51.0	54.0	57.0	60.0	63.0	1.5
	LENGTH	68.0	70.0	72.0	74.0	76.0	78.0	80.0	2.0
	SLEEVE LENGTH (FROM HNP)	74.0	76.0	78.0	80.0	82.0	84.0	86.0	2.0
	SF527 UNISEX OVERSIZED HOODY	XXS	XS	S	M	L	XL	XXL	TOLS +/-
	CHEST	54.0	57.0	60.0	63.0	66.0	69.0	72.0	2.0
	LENGTH FROM HPS	72.0	74.0	76.0	78.0	80.0	82.0	84.0	2.0
	SLEEVE LENGTH (FROM SHOULDER)	56.0	57.0	58.0	59.0	60.0	61.0	62.0	1.5
	SF560 MEN'S BRUSHED CHECK CASUAL SHIRT			S	M	L	XL	XXL	TOLS +/-
	CHEST			50.0	53.0	56.0	59.0	62.0	1.5
	LENGTH			76.0	78.0	80.0	82.0	84.0	2.0
	SLEEVE LENGTH			65.0	66.0	67.0	68.0	69.0	2.0
	SF600 MEN'S STRETCH SKINNI JEANS	W28"	W30"	W32"	W34"	W36"	W38"	W40"	TOLS +/-
	WAIST	37.0	39.5	42.0	44.5	47.0	49.5	52.0	1.5
	REGULAR INSIDE LEG	76.0	76.0	76.0	76.0	76.0	76.0	76.0	2.0
	LONG INSIDE LEG	82.0	82.0	82.0	82.0	82.0	82.0	82.0	2.0

**S F W O M E N**

SK028 WOMEN'S MICROFLEECE JACKET	XS	S	M	L	XL	XXL	TOLS +/-
CHEST	40.0	43.0	46.0	49.0	52.0	55.0	1.5
LENGTH	60.0	62.0	64.0	66.0	68.0	70.0	2.0
SLEEVE LENGTH (FROM HNP)	71.0	72.0	73.0	74.0	75.0	76.0	2.0
SK042 WOMEN'S SHORT SLEEVED STRETCH POLO		S	M	L	XL		TOLS +/-
CHEST		40.0	43.0	46.0	49.0		1.5
LENGTH		60.0	62.0	64.0	66.0		1.5
SLEEVE LENGTH		15.0	15.5	16.0	16.5		1.0
SK044 WOMEN'S LONG SLEEVED STRETCH POLO		S	M	L	XL		TOLS +/-
CHEST		40.0	43.0	46.0	49.0		1.5
LENGTH		60.0	62.0	64.0	66.0		1.5
SLEEVE LENGTH		58.0	60.0	62.0	64.0		1.5
SK062 WOMEN'S SHORTS		S	M	L			TOLS +/-
WAIST		35.0	38.0	41.0			1.5
INSIDE LEG		6.0	6.0	6.0			1.0
SK064 WOMEN'S LEGGINGS	XS	S	M	L	XL		TOLS +/-
WAIST	26.0	29.0	32.0	35.0	38.0		1.5
INSIDE LEG	70.0	70.0	70.0	70.0	70.0		2.0
SK068 WOMEN'S 3/4 LENGTH LEGGINGS	XS	S	M	L	XL	XXL	TOLS +/-
WAIST	27.5	30.5	33.5	36.5	39.5	42.5	1.5
INSIDE LEG	50.0	52.0	54.0	56.0	58.0	60.0	1.5
SK069 WOMEN'S RETRO SHORTS	XS	S	M	L	XL	XXL	TOLS +/-
WAIST	33.0	36.0	39.0	42.0	45.0	48.0	1.5
INSIDE LEG	5.0	5.0	5.0	5.0	5.0	5.0	1.0
SK082 WOMEN'S TARTAN FRILL LOUNGE SHORTS	XXS	XS	S	M	L	XL	TOLS +/-
WAIST	32.0	35.0	38.0	41.0	44.0	47.0	1.5
INSIDE LEG	6.0	6.0	6.0	6.0	6.0	6.0	1.0
SK083 WOMEN'S TARTAN LOUNGE PANTS	XXS	XS	S	M	L	XL	TOLS +/-
WAIST	32.0	35.0	38.0	41.0	44.0	47.0	1.5
INSIDE LEG	77.0	77.0	77.0	78.0	78.0	78.0	2.0
SK104 WOMEN'S STRETCH VEST DRESS		S	M	L	XL		TOLS +/-
CHEST		38.0	41.0	44.0	47.0		1.5
LENGTH		82.0	84.0	86.0	88.0		2.0
SK121 WOMEN'S FEEL GOOD STRETCH T	XS	S	M	L	XL	XXL	TOLS +/-
CHEST	39.5	41.5	44.5	47.5	51.5	55.5	1.5
LENGTH	61.0	62.0	63.0	64.0	65.0	66.0	1.5
SLEEVE LENGTH	15.0	15.0	15.5	16.0	16.0	16.0	1.0
SK122 WOMEN'S FEEL GOOD STRETCH V	XS	S	M	L	XL	XXL	TOLS +/-
CHEST	39.5	41.5	44.5	47.5	51.5	55.5	1.5
LENGTH	61.0	62.0	63.0	64.0	65.0	66.0	1.5
SLEEVE LENGTH	15.0	15.0	15.5	16.0	16.0	16.0	1.0
SK123 WOMEN'S FEEL GOOD STRETCH VEST	XS	S	M	L	XL	XXL	TOLS +/-
CHEST	37.0	40.0	43.0	46.0	49.0	52.0	1.5
LENGTH	61.0	62.0	63.0	64.0	65.0	66.0	1.5
SK124 WOMEN'S FEEL GOOD STRETCH LONG SLEEVED T	XS	S	M	L	XL	XXL	TOLS +/-
CHEST	40.0	43.0	46.0	49.0	52.5	56.5	1.5
LENGTH	61.0	62.0	63.0	64.0	65.0	66.0	1.5
SLEEVE LENGTH	58.0	58.0	59.0	59.0	60.0	60.0	1.5
SK125 WOMEN'S FEEL GOOD STRETCH ROLL NECK	XS	S	M	L	XL	XXL	TOLS +/-
CHEST	39.0	42.0	45.0	48.0	51.0	54.0	1.5
LENGTH	61.0	62.0	63.0	64.0	65.0	66.0	1.5
SLEEVE LENGTH	59.0	59.0	60.0	60.0	61.0	61.0	1.5
SK126 WOMEN'S FEEL GOOD STRETCH SPAGHETTI VEST	XS	S	M	L	XL		TOLS +/-
CHEST	37.0	40.0	43.0	46.0	49.0		1.5
LENGTH	47.0	48.0	49.0	50.0	51.0		1.5
SK127 WOMEN'S FEEL GOOD STRETCH CONTRAST STRAPPY VEST	XS	S	M	L			TOLS +/-
CHEST	34.0	37.0	40.0	43.0			1.5
LENGTH	46.0	47.0	48.0	49.0			1.5
SK150 WOMEN'S STRETCH RACER-BACK TANK		S	M	L			TOLS +/-
CHEST		28.0	31.0	34.0			+/-1.5
LENGTH		61.0	63.0	65.0			+/-1.5
SK170 WOMEN'S HIGH NECK CROP VEST	XS	S	M	L			TOLS +/-
CHEST	34.0	37.0	40.0	43.0			1.5
LENGTH	46.0	47.0	48.0	49.0			1.5
SK213 WOMEN'S SLOUNGE T		S	M	L	XL		TOLS +/-
CHEST		43.0	46.0	49.0	53.0		1.5
LENGTH		66.0	66.0	67.0	68.0		2.0
SLEEVE LENGTH (FROM HNP)		15.0	15.5	16.0	16.5		1.0

SK232 WOMEN'S HIGH NECK SLASH ARMHOLE VEST	XS	S	M	L	XL	XXL	TOLS +/-
CHEST	42.0	45.0	48.0	51.0	53.0	55.0	1.5
LENGTH	59.0	62.0	65.0	68.0	71.0	74.0	2.0
SK233 WOMEN'S DROP TAIL T	XS	S	M	L	XL	XXL	TOLS +/-
CHEST	44.0	46.0	48.0	50.0	52.0	54.0	1.5
LENGTH (FRONT)	53.0	55.0	57.0	59.0	61.0	63.0	1.5
LENGTH (BACK)	67.5	69.5	71.5	73.5	75.5	77.5	2.0
SLEEVE LENGTH	20.0	21.0	22.0	23.0	24.0	25.0	1.5
SK234 WOMEN'S SLOUNGE VEST	XS	S	M	L	XL	XXL	TOLS +/-
CHEST	37.0	40.0	43.0	46.0	49.0	52.0	1.5
LENGTH	62.5	64.0	65.5	67.0	68.5	70.0	2.0
SK235 WOMEN'S WORKOUT CROPPED TOP	XS	S	M	L			TOLS +/-
CHEST	29.0	32.0	35.0	37.0			1.5
LENGTH	29.0	31.0	33.0	34.0			1.5
SK236 WOMEN'S FASHION CROP TOP	XS	S	M	L			TOLS +/-
CHEST	34.0	37.0	40.0	43.0			1.5
LENGTH	31.0	32.5	34.0	35.5			1.5
SK237 WOMEN'S CROPPED BOXY T	XXS	XS	S	M	L	XL	TOLS +/-
CHEST	45.0	48.0	51.0	54.0	57.0	60.0	1.5
LENGTH	48.0	49.0	50.0	50.0	51.0	51.0	1.5
SLEEVE LENGTH	17.0	18.0	19.0	20.0	21.0	22.0	1.0
SK240 WOMEN'S REVERSIBLE WORKOUT VEST	XS	S	M	L	XL		TOLS +/-
CHEST	34.0	37.0	40.0	43.0	46.0		1.5
LENGTH	61.0	62.0	63.0	64.0	65.0		2.0
SK241 WOMEN'S FASHION WORKOUT VEST	XS	S	M	L	XL	XXL	TOLS +/-
CHEST	39.0	42.0	45.0	48.0	51.0	54.0	1.5
LENGTH	60.0	61.5	63.0	64.5	66.0	67.5	2.0
SK257 WOMEN'S T SHIRT DRESS		S	M	L	XL		TOLS +/-
CHEST		43.0	46.0	49.0	52.0		1.5
LENGTH		82.0	84.0	86.0	88.0		2.0
SLEEVE LENGTH		15.0	15.5	16.0	16.5		1.0
SK263 WOMEN'S SLOUNGE TOP	XS	S	M	L	XL		TOLS +/-
CHEST	54.0	57.0	60.0	63.0	66.0		1.5
LENGTH (FRONT)	66.0	67.0	68.0	69.0	70.0		2.0
LENGTH (BACK)	67.0	68.0	69.0	70.0	71.0		2.0
SLEEVE LENGTH	44.0	45.0	46.0	47.0	48.0		1.5
SK271 WOMEN'S LONG SLEEVED BASEBALL T	XS	S	M	L	XL		TOLS +/-
CHEST	41.5	43.5	46.5	49.5	53.5		1.5
LENGTH (FRONT)	58.0	59.0	60.0	61.0	62.0		2.0
SLEEVE LENGTH (FROM HNP)	66.5	67.5	68.5	69.5	70.5		2.0
SK424 WOMEN'S REVERSIBLE WORKOUT LEGGINGS	XS	S	M	L	XL		TOLS +/-
WAIST	27.5	29.5	31.5	33.5	35.5		1.5
INSIDE LEG	70.5	70.5	70.5	70.5	70.5		2.0
SK425 WOMEN'S SLIM FIT CUFFED JOGGERS	XS	S	M	L	XL		TOLS +/-
WAIST	33.5	36.0	38.5	41.0	43.5		1.5
INSIDE LEG	75.5	76.5	76.5	77.5	77.5		2.0
NEW SK426 WOMEN'S FASHION LEGGINGS	XS	S	M	L	XL		TOLS +/-
WAIST	29.0	32.0	35.0	38.0	41.0		1.5
INSIDE LEG	78.5	78.5	78.5	78.5	78.5		2.0
NEW SK427 WOMEN'S FASHION CYCLING SHORTS	XS	S	M	L	XL		TOLS +/-
WAIST	29.0	32.0	35.0	38	41.0		1.5
INSIDE LEG	18.0	18.0	18.0	18.0	18.0		1.0
SK436 WOMEN'S FASHION BRIEFS	XS	S	M	L			TOLS +/-
WAIST	34.5	37.5	40.5	43.5			1.5
LENGTH (FRONT)	19.5	20.5	21.5	22.5			1.5
SK440 WOMEN'S FASHION POLO	XS	S	M	L	XL		TOLS +/-
CHEST	38.0	41.0	43.0	46.0	49.0		1.5
LENGTH	60.0	62.0	64.0	66.0	68.0		2.0
SLEEVE LENGTH	13.0	14.0	15.0	16.0	17.0		1.0
SK513 WOMEN'S SLOUNGE SWEAT		S	M	L	XL		TOLS +/-
CHEST		52.0	56.0	59.0	62.0		1.5
LENGTH		60.0	62.0	64.0	66.0		2.0
SLEEVE LENGTH		69.0	70.0	71.0	72.0		2.0
SK515 WOMEN'S CROPPED SLOUNGE SWEAT	XS	S	M	L	XL		TOLS +/-
CHEST	53.0	56.0	59.0	62.0	65.0		1.5
LENGTH	49.5	50.5	51.5	52.5	53.5		2.0
SLEEVE LENGTH	53.0	54.0	55.0	56.0	57.0		2.0
NEW SK516 WOMEN'S CROPPED SLOUNGE HOODY	XS	S	M	L	XL		TOLS +/-
CHEST	53.5	56.0	58.5	61.0	63.5		2.0
LENGTH	49.5	50.5	51.5	52.5	53.5		1.5
SLEEVE LENGTH	53.0	54.0	55.0	56.0	57.0		1.5
SK600 WOMEN'S STRETCH SKINNI JEANS	W26"	W28"	W30"	W32"	W34"	W36"	TOLS +/-
WAIST	32.5	35.0	37.5	40.0	42.5	45.0	1.5
REGULAR INSIDE LEG	72.0	72.0	72.0	72.0	72.0	72.0	2.0
LONG INSIDE LEG	78.0	78.0	78.0	78.0	78.0	78.0	2.0

S F M I N N I

SM016 KIDS' TANK VEST	AGE (YEARS)	4-6	7-9	10-12			TOLS +/-	
CHEST		29.0	31.0	33.0			1.5	
LENGTH		43.0	46.0	49.0			1.5	
SM062 KIDS' SHORTS	AGE (YEARS)	5-6	7-8	9-10	11-12			TOLS +/-
WAIST		27.0	30.0	33.0	36.0			1.5
INSIDE LEG		5.0	5.0	5.0	5.0			1.0
SM064 KIDS' LEGGINGS	AGE (YEARS)	3-4	5-6	7-8	9-10	11-12	TOLS +/-	
WAIST		23.0	25.0	27.0	30.0	33.0	1.5	
INSIDE LEG		40.0	45.5	51.0	56.5	62.0	1.5	
SM069 KIDS' RETRO SHORTS	AGE (YEARS)	5-6	7-8	9-10	11-12			TOLS +/-
WAIST		25.0	28.0	31.0	34.0			1.5
INSIDE LEG		3.0	3.0	3.5	3.5			1.0
SM083 KIDS TARTAN LOUNGE PANTS	AGE (YEARS)	5-6	7-8	9-10	11-12	13	TOLS +/-	
WAIST		25.0	28.0	31.0	34.0	37.0	1.5	
INSIDE LEG		25.0	37.0	29.0	31.0	33.0	1.5	
SM121 KIDS' FEEL GOOD STRETCH T	AGE (YEARS)	3-4	5-6	7-8	9-10	11-12	TOLS +/-	
CHEST		30.0	33.0	36.0	39.0	42.0	1.5	
LENGTH		40.0	44.0	48.0	52.0	56.0	1.5	
SLEEVE LENGTH		12.5	13.5	14.5	15.5	16.5	1.0	
SM123 KIDS' FEEL GOOD STRETCH VEST	AGE (YEARS)	5-6	7-8	9-10	11-12			TOLS +/-
CHEST		32.0	35.0	38.0	41.0			1.5
LENGTH		44.0	48.0	52.0	56.0			1.5
NEW SM126 KIDS FEEL GOOD STRETCH SPAGHETTI VEST	AGE (YEARS)	5-6	7-8	9-10	11-12			TOLS +/-
CHEST		29.9	32.0	35.0	38.0			1.5
LENGTH		34.0	38.0	42.0	46.0			1.5
SM127 KIDS' FEEL GOOD STRETCH CONTRAST STRAPPY VEST	AGE (YEARS)	5-6	7-8	9-10	11-12			TOLS +/-
CHEST		26.0	29.0	32.0	35.0			1.5
LENGTH		38.0	39.0	40.0	41.0			1.5
SM170 KIDS' HIGH NECK CROP VEST	AGE (YEARS)	5-6	7-8	9-10	11-12			TOLS +/-
CHEST		26.0	29.0	32.0	35.0			1.5
LENGTH		38.5	39.5	40.5	41.5			1.5
SM202 KIDS' STRIPED T	AGE (YEARS)	5-6	7-8	9-10	11-12			TOLS +/-
CHEST		34.0	37.0	40.0	43.0			1.5
LENGTH		44.0	48.0	52.0	56.0			1.5
SLEEVE LENGTH		13.5	14.5	15.5	16.5			1.0
SM236 KIDS' FASHION CROP TOP	AGE (YEARS)	5-6	7-8	9-10	11-12			TOLS +/-
CHEST		26.0	29.0	32.0	35.0			1.5
LENGTH		25.5	27.0	28.5	30.0			1.5
SM241 KIDS' FASHION WORKOUT VEST	AGE (YEARS)	5-6	7-8	9-10	11-12			TOLS +/-
CHEST		29.0	32.0	35.0	38.0			1.5
LENGTH		47.0	49.5	52.0	54.5			1.5
SM258 KIDS' LONGLINE T WITH DIPPED HEM	AGE (YEARS)	5-6	7-8	9-10	11-12			TOLS +/-
CHEST		34.0	37.0	40.0	43.0			1.5
LENGTH (FRONT)		51.0	55.0	59.0	63.0			1.5
LENGTH (BACK)		53.5	57.5	61.5	65.5			1.5
SLEEVE LENGTH		13.5	14.5	15.5	16.5			1.0
SM271 KIDS' LONG SLEEVED BASEBALL T	AGE (YEARS)	5-6	7-8	9-10	11-12			TOLS +/-
CHEST		33.0	36.0	39.0	42.0			1.5
LENGTH		46.0	49.0	52.0	55.0			1.5
SLEEVE LENGTH (FROM HNP)		48.0	51.5	55.0	57.5			1.5
SM424 KIDS' REVERSIBLE WORKOUT LEGGINGS	AGE (YEARS)	5-6	7-8	9-10	11-12			TOLS +/-
WAIST		25.0	27.0	30.0	33.0			1.5
INSIDE LEG		46.5	52.0	57.5	63.0			1.5
SM425 KIDS' SLIM FIT CUFFED JOGGERS	AGE (YEARS)	5-6	7-8	9-10	11-12			TOLS +/-
WAIST		25.0	28.0	31.0	34.0			1.5
INSIDE LEG		47.0	53.0	59.0	65.0			1.5
NEW SM426 KIDS' FASHION LEGGINGS	AGE (YEARS)	5-6	7-8	9-10	11-12			TOLS +/-
WAIST		25.0	27.0	30.0	33.0			1.5
INSIDE LEG		45.5	51.0	56.5	62.0			1.5
NEW SM427 KIDS' FASHION CYCLING SHORTS	AGE (YEARS)	5-6	7-8	9-10	11-12			TOLS +/-
WAIST		25.0	27.0	30.0	33.0			1.5
INSIDE LEG		13.0	13.0	13.0	13.0			1.0
SM470 KIDS' ALL-IN-ONE	AGE (YEARS)	3-4	5-6	7-8	9-10	11-12	13	TOLS +/-
CHEST		34.0	37.0	40.0	43.0	46.0	50.0	1.5
LENGTH		90.0	101.0	112.0	123.0	134.0	145.0	3.0
SLEEVE LENGTH		44.0	46.5	49.0	51.5	54.0	56.5	1.5
WAIST		37.0	40.0	43.0	46.0	49.0	52.0	1.5
INSIDE LEG		38.0	44.0	50.0	56.0	62.0	68.0	1.5

SM514 KIDS' DROP SHOULDER SLOGAN TOP	AGE (YEARS)	5-6	7-8	9-10	11-12	TOLS +/-
CHEST		38.0	41.0	44.0	47.0	1.5
LENGTH (FRONT)		48.0	52.0	56.0	60.0	1.5
LENGTH (BACK)		51.0	55.0	59.0	63.0	1.5
SLEEVE LENGTH		33.0	35.0	37.0	39.0	1.5
SHOULDER TO SHOULDER		55.0	57.0	59.0	61.0	1.5

---

SM526 KIDS' ZIP-THROUGH HOODY	AGE (YEARS)	5-6	7-8	9-10	11-12	TOLS +/-
CHEST		36.0	39.0	42.0	45.0	1.5
LENGTH		46.0	50.0	54.0	58.0	1.5
SLEEVE LENGTH		53.0	56.0	59.0	62.0	1.5



SM127 KIDS' FEEL GOOD STRETCH CONTRAST STRAPPY VEST (PAGE 58)

**SF028**  
PAGE 51



MEN'S MICROFLEECE JACKET  
SIZES: S-XXL



**SF042**  
PAGE 40



MEN'S SHORT SLEEVED  
STRETCH POLO  
SIZES: S-XXL



**SF044**  
PAGE 41



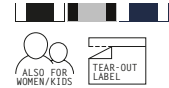
MEN'S LONG SLEEVED STRETCH POLO  
SIZES: S-XXL



**SF069**  
PAGE 33



MEN'S RETRO SHORTS  
WITH POCKETS  
SIZES: S-XL



**SF082**  
PAGE 55



MEN'S TARTAN LOUNGE SHORTS  
SIZES: XS-XXL



**SF083**  
PAGE 54



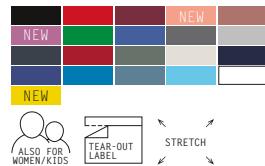
MEN'S TARTAN LOUNGE PANTS  
SIZES: XS-XXL



**SF121**  
PAGE 9



MEN'S FEEL GOOD STRETCH T  
SIZES: XS-XXL (XS-BLACK + WHITE)



**SF122**  
PAGE 10



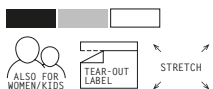
MEN'S FEEL GOOD STRETCH V  
SIZES: S-XXL



**SF123**  
PAGE 12



MEN'S FEEL GOOD STRETCH VEST  
SIZES: S-XXL



**SF124**  
PAGE 11



MEN'S FEEL GOOD STRETCH  
LONG SLEEVED T  
SIZES: S-XXL



**SF125**  
PAGE 11



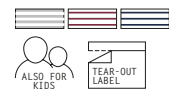
MEN'S FEEL GOOD STRETCH  
ROLL NECK  
SIZES: S-XXL



**SF202**  
PAGE 16



UNISEX STRIPED T  
SIZES: XXS-XXL



**UNISEX**  
**SF203**  
 PAGE 18



UNISEX WASHED BAND T  
 SIZES: XXS-XXL

BRAND FREE

**UNISEX**  
**SF204**  
 PAGE 16



UNISEX LONG SLEEVED STRIPED T  
 SIZES: XXS-XXL

TEAR-OUT LABEL

**SF232**  
 PAGE 27



MEN'S HIGH NECK SLASH ARMHOLE VEST  
 SIZES: XS-XXL

ALSO FOR WOMEN

TEAR-OUT LABEL

**SF236**  
 PAGE 26



MEN'S MUSCLE VEST  
 SIZES: S-XXL

TEAR-OUT LABEL


**UNISEX NEW**  
**SF253**  
 PAGE 19



UNISEX CONTRAST T  
 SIZES: XXS-XXL

TEAR-OUT LABEL

**UNISEX NEW**  
**SF254**  
 PAGE 21



UNISEX SCOOP NECK T  
 SIZES: XXS-XXL

TEAR-OUT LABEL

**SF258**  
 PAGE 25



MEN'S LONGLINE T WITH DIPPED HEM  
 SIZES: S-XXL

ALSO FOR KIDS

TEAR-OUT LABEL

**NEW**  
**SF259**  
 PAGE 25



MEN'S LONG SLEEVED LONGLINE T WITH DIPPED HEM  
 SIZES: S-XXL

TEAR-OUT LABEL

**SF271**  
 PAGE 17



MEN'S LONG SLEEVED BASEBALL T  
 SIZES: XS-XXL

ALSO FOR WOMEN/KIDS

TEAR-OUT LABEL

**UNISEX NEW**  
**SF423**  
 PAGE 47



UNISEX CONTRAST JOGGERS  
 SIZES: XXS-XXL

TEAR-OUT LABEL

**SF425**  
 PAGES 44-45



MEN'S SLIM FIT CUFFED JOGGERS  
 SIZES: S-XXL

ALSO FOR WOMEN/KIDS

TEAR-OUT LABEL

**SF440**  
 PAGE 39



MEN'S FASHION POLO  
 SIZES: S-XXL

ALSO FOR WOMEN

TEAR-OUT LABEL

**UNISEX SF470**  
PAGE 52



UNISEX ALL-IN-ONE  
SIZES: XXS/XS, S/M, L/XL





**UNISEX SF511**  
PAGE 50




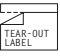
UNISEX BOMBER ZIP-THROUGH SWEAT  
SIZES: XS-XXL




**UNISEX SF512**  
PAGE 50



UNISEX BASEBALL JACKET WITH DETACHABLE HOOD  
SIZES: XS-XXL

**UNISEX SF514**  
PAGE 20



UNISEX DROP SHOULDER SLOGAN TOP  
SIZES: XXS-XXL




**UNISEX SF520**  
PAGE 48



UNISEX WASHED TOUR SWEAT  
SIZES: XXS-XXL




**UNISEX SF523**  
PAGE 47



UNISEX CONTRAST SWEAT  
SIZES: XXS-XXL





**UNISEX SF525**  
PAGES 44-45





UNISEX SLIM FIT SWEAT  
SIZES: XXS-XXL




**UNISEX SF526**  
PAGES 44-45



UNISEX SLIM FIT ZIP-THROUGH HOODIE  
SIZES: XXS-XXL

**UNISEX SF527**  
PAGE 46



UNISEX OVERSIZED HOODIE  
SIZES: XXS-XXL




**SF560**  
PAGE 36



MEN'S BRUSHED CHECK CASUAL SHIRT  
SIZES: S-XXL




**SF600**  
PAGE 36-37



MEN'S STRETCH SKINNI JEANS  
SIZES: W28"/EUR 38 - W40"/EUR 50 REG & LONG LENGTHS






SF WOMEN

**SK028**  
PAGE 51



WOMEN'S MICROFLEECE JACKET  
SIZES: XS-XXL



**SK042**  
PAGE 40



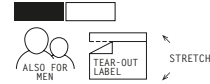
WOMEN'S SHORT SLEEVED  
STRETCH POLO  
SIZES: S-XL



**SK044**  
PAGE 41



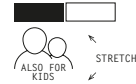
WOMEN'S LONG SLEEVED  
STRETCH POLO  
SIZES: S-XL



**SK062**  
PAGE 32



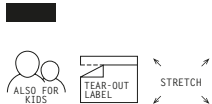
WOMEN'S SHORTS  
SIZES: S-L



**SK064**  
PAGE 34



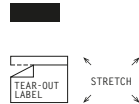
WOMEN'S LEGGINGS  
SIZES: XS-XXL



**SK068**  
PAGE 34



WOMEN'S 3/4 LENGTH LEGGINGS  
SIZES: XS-XXL



**SK069**  
PAGE 33



WOMEN'S RETRO SHORTS  
SIZES: XS-XXL



**SK082**  
PAGE 55



WOMEN'S TARTAN FRILL  
LOUNGE SHORTS  
SIZES: XXS-XL



**SK083**  
PAGE 54



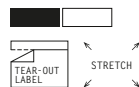
WOMEN'S TARTAN LOUNGE PANTS  
SIZES: XXS-XL



**SK104**  
PAGE 24



WOMEN'S STRETCH VEST DRESS  
SIZES: S-XL



**SK121**  
PAGE 9



WOMEN'S FEEL GOOD STRETCH T  
SIZES: XS-XXL



**SK122**  
PAGE 10



WOMEN'S FEEL GOOD STRETCH V  
SIZES: XS-XXL



**SK123**  
PAGE 12



WOMEN'S FEEL GOOD STRETCH VEST  
SIZES: XS-XXL

Color swatches: Black, Grey, White

Icons: ALSO FOR MEN/KIDS, TEAR-OUT LABEL, STRETCH

**SK124**  
PAGE 11



WOMEN'S FEEL GOOD STRETCH LONG SLEEVED T  
SIZES: XS-XXL

Color swatches: Black, Red, Blue, Grey, White

Icons: ALSO FOR MEN, TEAR-OUT LABEL, STRETCH

**SK125**  
PAGE 11



WOMEN'S FEEL GOOD STRETCH ROLL NECK  
SIZES: XS-XXL

Color swatches: Black

Icons: ALSO FOR MEN, TEAR-OUT LABEL, STRETCH

**SK126**  
PAGE 13



WOMEN'S FEEL GOOD STRETCH SPAGHETTI VEST  
SIZES: XS-XL

Color swatches: Black

Icons: ALSO FOR KIDS, TEAR-OUT LABEL, STRETCH

**SK127**  
PAGE 13



WOMEN'S FEEL GOOD STRETCH CONTRAST STRAPPY VEST  
SIZES: XS-L

Color swatches: Black, White

Icons: ALSO FOR KIDS, TEAR-OUT LABEL, STRETCH

**SK150**  
PAGE 29



WOMEN'S STRETCH RACER-BACK TANK  
SIZES: S-L

Color swatches: Black, White

Icon: STRETCH

**SK170**  
PAGE 28



WOMEN'S HIGH NECK CROP VEST  
SIZES: XS-L

Color swatches: Black, White

Icons: ALSO FOR KIDS, TEAR-OUT LABEL, STRETCH

**SK213**  
PAGE 22



WOMEN'S SLOUNGE T  
SIZES: S-XL

Color swatches: Black, White

Icon: TEAR-OUT LABEL

**SK232**  
PAGE 27



WOMEN'S HIGH NECK SLASH ARMHOLE VEST  
SIZES: XS-XXL

Color swatches: Black, Grey, White

Icons: ALSO FOR MEN, TEAR-OUT LABEL

\* PLEASE NOTE SOME STOCK OF SK232 MAY HAVE MOVED CUT-OUT BACK NECK LABELS - ALL RECENT AND NEW PRODUCTION HAS TEAR-OUT LABELS

**SK233**  
PAGE 23



WOMEN'S DROP TAIL T  
SIZES: XS-XXL

Color swatches: Black, White

Icon: TEAR-OUT LABEL

**SK234**  
PAGE 26



WOMEN'S SLOUNGE VEST  
SIZES: XS-XXL

Color swatches: Black, White

Icon: TEAR-OUT LABEL

**SK235**  
PAGE 31



WOMEN'S WORKOUT CROPPED TOP  
SIZES: XS-L

Color swatches: Black, Pink

Icons: TEAR-OUT LABEL, STRETCH

**SK236**  
PAGES 28-29



**WOMEN'S FASHION CROP TOP**  
SIZES: XS-L

NEW

ALSO FOR KIDS

TEAR-OUT LABEL

STRETCH

**SK237**  
PAGE 23



**WOMEN'S CROPPED BOXY T**  
SIZES: XXS-XL

TEAR-OUT LABEL

**SK240**  
PAGE 30



REVERSIBLE

**WOMEN'S REVERSIBLE WORKOUT VEST**  
SIZES: XS-XL

BRAND FREE

STRETCH

**SK241**  
PAGE 31



**WOMEN'S FASHION WORKOUT VEST**  
SIZES: XS-XXL

ALSO FOR KIDS

TEAR-OUT LABEL

STRETCH

**SK257**  
PAGE 24



**WOMEN'S T-SHIRT DRESS**  
SIZES: S-XL

TEAR-OUT LABEL

**SK263**  
PAGE 22



**WOMEN'S SLOUNGE TOP**  
SIZES: XS-XL

TEAR-OUT LABEL

**SK271**  
PAGE 17



**WOMEN'S LONG SLEEVED BASEBALL T**  
SIZES: XS-XL

ALSO FOR MEN/KIDS

TEAR-OUT LABEL

**SK424**  
PAGE 30 + 34



REVERSIBLE

**WOMEN'S REVERSIBLE WORKOUT LEGGINGS**  
SIZES: XS-XL

ALSO FOR KIDS

TEAR-OUT LABEL

STRETCH

**SK425**  
PAGES 44-45



**WOMEN'S SLIM FIT CUFFED JOGGERS**  
SIZES: XS-XL

ALSO FOR MEN/KIDS

TEAR-OUT LABEL

**NEW SK426**  
PAGE 35



**WOMEN'S FASHION LEGGINGS**  
SIZES: XS-XL

ALSO FOR KIDS

TEAR-OUT LABEL

STRETCH

**NEW SK427**  
PAGE 35



**WOMEN'S FASHION CYCLING SHORTS**  
SIZES: XS-XL

ALSO FOR KIDS

TEAR-OUT LABEL

STRETCH

**SK436**  
PAGE 29



**WOMEN'S FASHION BRIEFS**  
SIZES: XS-L

TEAR-OUT LABEL

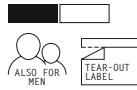
STRETCH

**SK440**

PAGE 39



WOMEN'S FASHION POLO  
SIZES: XS-XL

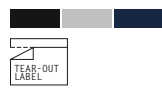


**SK513**

PAGE 48



WOMEN'S SLOUNGE SWEAT  
SIZES: S-XL



**SK515**

PAGE 49



WOMEN'S CROPPED SLOUNGE SWEAT  
SIZES: XS-XL



**NEW**

**SK516**

PAGE 49



WOMEN'S CROPPED SLOUNGE HOODY  
SIZES: XS-XL

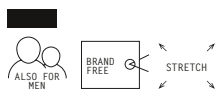


**SK600**

PAGES 36-37



WOMEN'S STRETCH SKINNI JEANS  
SIZES: W26"/UK 8/EUR 36 -  
W36"/UK 18/EUR 46  
REG + LONG LENGTHS

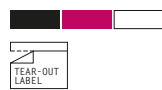


**SM016**

PAGE 62



KIDS' TANK VEST  
SIZES (YEARS):  
4-6, 7-9, 10-12

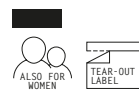


**SM062**

PAGE 62



KIDS' SHORTS  
SIZES (YEARS): 5-6, 7-8, 9-10,  
11-12

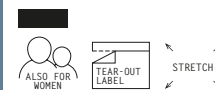


**SM064**

PAGE 62



KIDS' LEGGINGS  
SIZES (YEARS): 3-4, 5-6, 7-8,  
9-12, 11-12



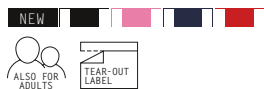
**SF MINNI**

**SM069**

PAGE 63



KIDS' RETRO SHORTS  
SIZES (YEARS): 5-6, 7-8, 9-10,  
11-12



**NEW**

**SM083**

PAGE 54



KIDS' TARTAN LOUNGE PANTS  
SIZES (YEARS): 5-6, 7-8, 9-10,  
11-12, 13



**SM121**

PAGES 59



KIDS' FEEL GOOD STRETCH T  
SIZES (YEARS): 3-4, 5-6, 7-8,  
9-10, 11-12

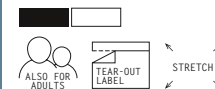


**SM123**

PAGE 59



KIDS' FEEL GOOD STRETCH VEST  
SIZES (YEARS): 5-6, 7-8, 9-10,  
11-12

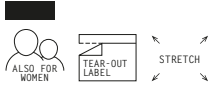


NEW

**SM126**  
PAGE 58



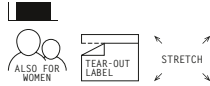
KIDS' FEEL GOOD STRETCH SPAGHETTI VEST  
SIZES (YEARS): 5-6, 7-8, 9-10, 11-12



**SM127**  
PAGE 58



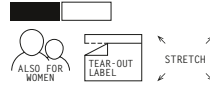
KIDS' FEEL GOOD STRETCH CONTRAST STRAPPY VEST  
SIZES (YEARS): 5-6, 7-8, 9-10, 11-12



**SM170**  
PAGE 62



KIDS' HIGH NECK CROP VEST  
SIZES (YEARS): 5-6, 7-8, 9-10, 11-12



**SM202**  
PAGE 65



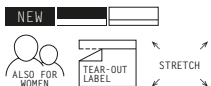
KIDS' STRIPED T  
SIZES (YEARS): 5-6, 7-8, 9-10, 11-12



**SM236**  
PAGE 61



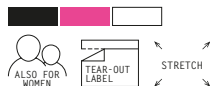
KIDS' FASHION CROP TOP  
SIZES (YEARS): 5-6, 7-8, 9-10, 11-12



**SM241**  
PAGE 60



KIDS' FASHION WORKOUT VEST  
SIZES (YEARS): 5-6, 7-8, 9-10, 11-12



**SM258**  
PAGE 64



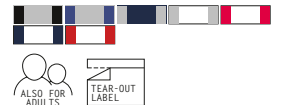
KIDS' LONGLINE T WITH DIPPED HEM  
SIZES (YEARS): 5-6, 7-8, 9-10, 11-12



**SM271**  
PAGE 66



KIDS' LONG SLEEVED BASEBALL T  
SIZES (YEARS): 5-6, 7-8, 9-10, 11-12

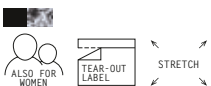


**SM424**  
PAGE 60



REVERSIBLE

KIDS' REVERSIBLE WORKOUT LEGGINGS  
SIZES (YEARS): 5-6, 7-8, 9-10, 11-12



**SM425**  
PAGE 68



KIDS' SLIM FIT CUFFED JOGGERS  
SIZES (YEARS): 5-6, 7-8, 9-10, 11-12



NEW

**SM426**  
PAGE 61



KIDS' FASHION LEGGINGS  
SIZES (YEARS): 5-6, 7-8, 9-10, 11-12



NEW

**SM427**  
PAGE 61



KIDS' FASHION CYCLING SHORTS  
SIZES (YEARS): 5-6, 7-8, 9-10, 11-12



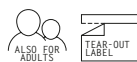
**SM470**

PAGES  
52 + 69



**KIDS' ALL-IN-ONE**

SIZES (YEARS): 3-4, 5-6, 7-8,  
9-10, 11-12, 13



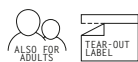
**SM514**

PAGE 67



**KIDS' DROP SHOULDER SLOGAN TOP**

SIZES (YEARS): 5-6, 7-8, 9-10,  
11-12



**SM526**

PAGE 68



**KIDS' SLIM FIT ZIP-THROUGH**

**HOODY**  
SIZES (YEARS): 5-6, 7-8, 9-10,  
11-12



SF123 MEN'S FEEL GOOD STRETCH VEST (PAGE 12)  
SK121 WOMEN'S FEEL GOOD STRETCH T (PAGE 9)



# COLOUR GUIDE

BABY PINK PMS 517C	BLACK	BRIGHT PINK PMS 204C	BRIGHT RED / RED PMS 186C	BURGUNDY PMS 7428C
CLAY PMS 7524U	CORAL PMS 1625C	DEEP PURPLE PMS 669C	DUSKY PINK PMS 681C	FUCHSIA PMS 226C
GREEN PMS 355C	HEATHER BLUE PMS 2727C	HEATHER CHARCOAL PMS COOL GRAY 10 C	HEATHER GREY 34% BLACK	HEATHER NAVY PMS 432C
HEATHER PINK PMS 682C	HEATHER PURPLE PMS 668C	HEATHER RED PMS 201C	HOT PINK PMS 1925C	KHAKI PMS 5615U
LIGHT STONE PMS 7527U	NAVY PMS 533C	NEON PINK PMS 806C	OFF WHITE	OXFORD NAVY PMS 2767C
OXFORD NAVY MARL PMS 289C	PURPLE PMS 2617C	ROYAL PMS 280U	SAPPHIRE PMS 640C	STONE BLUE PMS 5415C
SURF BLUE PMS 305C	WASHED BLACK PMS 426C	WHITE	YELLOW (SF121/SK121) PMS 115C	YELLOW (SK069 TRIM) PMS 121C
NAVY/GREEN CHECK PMS 655C/349C/BLACK	RED/NAVY CHECK PMS 533C/200C/WHITE	WHITE/PINK CHECK PMS 655C/204C/WHITE	WHITE/MULTI CHECK PMS 655C/280C/WHITE	BLACK PRINT PMS 428C/877C/426C
BURGUNDY CHECK PMS 7428C/533C	LIGHT GREY CHECK PMS 7544U/533C	NAVY CHECK PMS 533C/COOL GRAY 10 C		



 SF-CLOTHING.COM

 SF.PROMO.CLOTHING

 SFSKINIFIT

 SFSKINIFIT

 SFSKINIFITCLOTHING



CARBON LOGO HERE

